



[Go to Product page](#)

Datasheet for ABIN1387885
anti-CHMP2B antibody (AA 31-120)

1 Image

Overview

Quantity:	100 µL
Target:	CHMP2B
Binding Specificity:	AA 31-120
Reactivity:	Mouse
Host:	Rabbit
Clonality:	Polyclonal
Conjugate:	This CHMP2B antibody is un-conjugated
Application:	Western Blotting (WB), ELISA, Immunofluorescence (Cultured Cells) (IF (cc)), Immunofluorescence (Paraffin-embedded Sections) (IF (p)), Immunohistochemistry (Paraffin-embedded Sections) (IHC (p)), Immunocytochemistry (ICC), Immunohistochemistry (Frozen Sections) (IHC (fro))

Product Details

Immunogen:	KLH conjugated synthetic peptide derived from human CHMP2B
Isotype:	IgG
Cross-Reactivity:	Mouse
Predicted Reactivity:	Human,Rat,Cow,Sheep,Pig,Horse,Chicken,Rabbit
Purification:	Purified by Protein A.

Target Details

Target:	CHMP2B
---------	--------

Target Details

Alternative Name: CHMP2B ([CHMP2B Products](#))

Background: Synonyms: Charged multivesicular body protein 2b, CHM2B_HUMAN, CHMP2.5, CHMP2b, Chromatin modifying protein 2b, Chromatin-modifying protein 2b, DMT1, hVps2-2, Vacuolar protein sorting 2-2, VPS2 homolog B, Vacuolar protein sorting-associated protein 2-2, Vps2-2, VPS2B.

Background: The charged multivesicular body proteins, commonly designated CHMPs, belong to the vacuolar sorting protein family and function as chromatin-modifying proteins. CHMP1-6 are all components of ESCRT (endosomal sorting complex required for transport) I, II or III complexes. These complexes are crucial for sorting endosomal articles into multivesicular bodies (MVBs), and are also required for the formation of these bodies. CHMP2B, also known as CHMP2.5 or vacuolar protein-sorting-associated protein 2-2, is a 213 amino acid cytosolic protein. Widely expressed in brain, heart, skeletal muscle, small intestine, pancreas, lung, placenta and leukocytes, CHMP2B associates directly with CHMP2A and vps4 for the disassembly of the ESCRT-III complex. Defects in the gene encoding CHMP2B have been shown to cause chromosome 3-linked frontotemporal dementia (FTD3).

Application Details

Application Notes: WB 1:300-5000
ELISA 1:500-1000
IHC-P 1:200-400
IHC-F 1:100-500
IF(IHC-P) 1:50-200
IF(IHC-F) 1:50-200
IF(ICC) 1:50-200
ICC 1:100-500

Restrictions: For Research Use only

Handling

Format: Liquid

Concentration: 1 µg/µL

Buffer: 0.01M TBS(pH 7.4) with 1 % BSA, 0.02 % Proclin300 and 50 % Glycerol.

Preservative: ProClin

Precaution of Use: This product contains ProClin: a POISONOUS AND HAZARDOUS SUBSTANCE, which should be

Handling

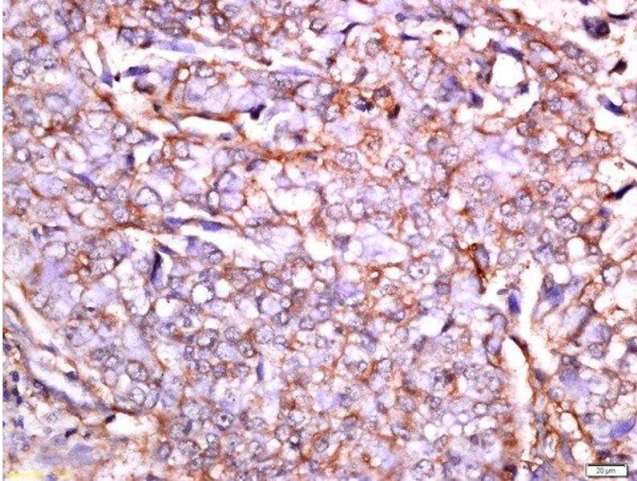
handled by trained staff only.

Storage: 4 °C,-20 °C

Storage Comment: Shipped at 4°C. Store at -20°C for one year. Avoid repeated freeze/thaw cycles.

Expiry Date: 12 months

Images



Immunohistochemistry (Paraffin-embedded Sections)

Image 1. Paraformaldehyde-fixed, paraffin embedded human lung cancer, Antigen retrieval by boiling in sodium citrate buffer (pH6) for 15min, Block endogenous peroxidase by 3% hydrogen peroxide for 30 minutes, Blocking buffer (normal goat serum) at 37°C for 20min, Antibody incubation with Rabbit Anti-CHMP2B Polyclonal Antibody, Unconjugated at 1:200 overnight at 4°C, followed by a conjugated secondary and DAB staining.