

Datasheet for ABIN1387887
anti-LIN28A antibody (AA 65-160)



[Go to Product page](#)

1 Image

Overview

Quantity:	100 µL
Target:	LIN28A
Binding Specificity:	AA 65-160
Reactivity:	Human, Rat
Host:	Rabbit
Clonality:	Polyclonal
Conjugate:	This LIN28A antibody is un-conjugated
Application:	Western Blotting (WB), ELISA, Immunohistochemistry (Paraffin-embedded Sections) (IHC (p)), Immunofluorescence (Cultured Cells) (IF (cc)), Immunofluorescence (Paraffin-embedded Sections) (IF (p)), Immunohistochemistry (Frozen Sections) (IHC (fro))

Product Details

Immunogen:	KLH conjugated synthetic peptide derived from human Lin-28B
Isotype:	IgG
Cross-Reactivity:	Human, Rat
Predicted Reactivity:	Mouse,Cow,Sheep,Pig,Horse,Chicken,Rabbit
Purification:	Purified by Protein A.

Target Details

Target:	LIN28A
---------	--------

Target Details

Alternative Name: [Lin-28 \(LIN28A Products\)](#)

Background: Synonyms: Lin28B, CSDD 2, CSDD2, FLJ16517, Lin 28 homolog B C. elegans, Lin 28.2, Lin-28B, LIN28B, LN28B_HUMAN, Protein lin-28 homolog B, Protein lin-28 homolog A, Lin-28A, Zinc finger CCHC domain-containing protein 1.

Background: Acts as a suppressor of microRNA (miRNA) biogenesis by specifically binding the precursor let-7 (pre-let-7), a miRNA precursor. Acts by binding pre-let-7 and recruiting ZCCHC11/TUT4 uridylyltransferase, leading to the terminal uridylation of pre-let-7. Uridylated pre-let-7 miRNAs fail to be processed by Dicer and undergo degradation. Specifically recognizes the 5'-GGAG-3' motif in the terminal loop of pre-let-7. Also recognizes and binds non pre-let-7 pre-miRNAs that contain the 5'-GGAG-3' motif in the terminal loop, leading to their terminal uridylation and subsequent degradation. Mediates MYC-mediated let-7 repression. Isoform 1, when overexpressed, stimulates growth of the breast adenocarcinoma cell line MCF-7. Isoform 2 has no effect on cell growth.

Gene ID: 389421, 79727

UniProt: [Q6ZN17](#), [Q9H9Z2](#)

Pathways: [Stem Cell Maintenance](#)

Application Details

Application Notes: WB 1:300-5000
ELISA 1:500-1000
IHC-P 1:200-400
IHC-F 1:100-500
IF(IHC-P) 1:50-200
IF(IHC-F) 1:50-200
IF(ICC) 1:50-200

Restrictions: For Research Use only

Handling

Format: Liquid

Concentration: 1 µg/µL

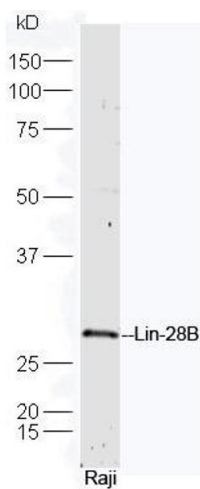
Buffer: 0.01M TBS(pH 7.4) with 1 % BSA, 0.02 % Proclin300 and 50 % Glycerol.

Preservative: ProClin

Handling

Precaution of Use:	This product contains ProClin: a POISONOUS AND HAZARDOUS SUBSTANCE, which should be handled by trained staff only.
Storage:	4 °C,-20 °C
Storage Comment:	Shipped at 4°C. Store at -20°C for one year. Avoid repeated freeze/thaw cycles.
Expiry Date:	12 months

Images



Western Blotting

Image 1. Raji cell lysates probed with Rabbit Anti-Lin-28B Polyclonal Antibody, Unconjugated (ABIN1387887) at 1:300 in 4°C. Followed by conjugation to secondary antibody at 1:5000 90min in 37°C.