



Datasheet for ABIN1387928
anti-S1PR5 antibody (AA 1-200)



[Go to Product page](#)

3 Images

Overview

Quantity:	100 µL
Target:	S1PR5
Binding Specificity:	AA 1-200
Reactivity:	Mouse
Host:	Rabbit
Clonality:	Polyclonal
Conjugate:	This S1PR5 antibody is un-conjugated
Application:	ELISA, Immunofluorescence (Cultured Cells) (IF (cc)), Immunofluorescence (Paraffin-embedded Sections) (IF (p)), Immunohistochemistry (Paraffin-embedded Sections) (IHC (p)), Immunohistochemistry (Frozen Sections) (IHC (fro)), Immunocytochemistry (ICC)

Product Details

Immunogen:	KLH conjugated synthetic peptide derived from human EDG8
Isotype:	IgG
Cross-Reactivity:	Mouse
Predicted Reactivity:	Human,Rat,Sheep,Pig,Horse,Rabbit
Purification:	Purified by Protein A.

Target Details

Target:	S1PR5
---------	-------

Target Details

Alternative Name: EDG8 ([S1PR5 Products](#))

Background: Synonyms: EDG8, S1P5, Edg-8, SPPR-1, SPPR-2, Sphingosine 1-phosphate receptor 5, S1P receptor 5, Endothelial differentiation G-protein-coupled receptor 8, Sphingosine 1-phosphate receptor Edg-8, S1P receptor Edg-8, S1PR5

Background: Receptor for the lysosphingolipid sphingosine 1-phosphate (S1P). S1P is a bioactive lysophospholipid that elicits diverse physiological effect on most types of cells and tissues. Is coupled to both the G(i/0)alpha and G(12) subclass of heteromeric G-proteins (By similarity). May play a regulatory role in the transformation of radial glial cells into astrocytes and may affect proliferative activity of these cells.

Gene ID: 53637

UniProt: [Q9H228](#)

Application Details

Application Notes: ELISA 1:500-1000
IHC-P 1:200-400
IHC-F 1:100-500
IF(IHC-P) 1:50-200
IF(IHC-F) 1:50-200
IF(ICC) 1:50-200
ICC 1:100-500

Restrictions: For Research Use only

Handling

Format: Liquid

Concentration: 1 µg/µL

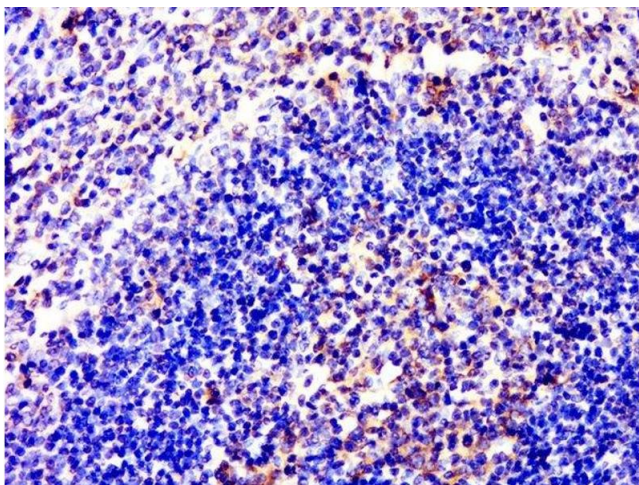
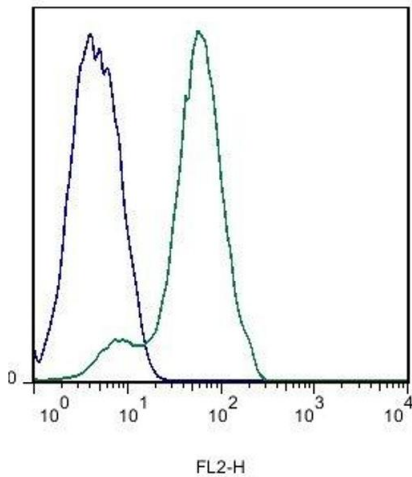
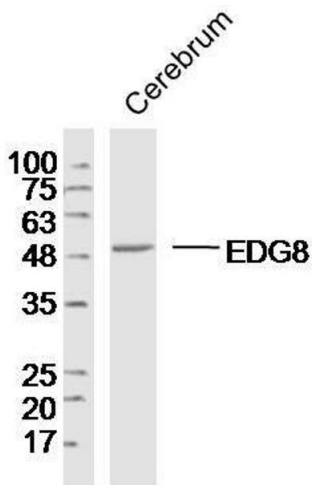
Buffer: 0.01M TBS(pH 7.4) with 1 % BSA, 0.02 % Proclin300 and 50 % Glycerol.

Preservative: ProClin

Precaution of Use: This product contains ProClin: a POISONOUS AND HAZARDOUS SUBSTANCE, which should be handled by trained staff only.

Storage: 4 °C,-20 °C

Storage Comment: Shipped at 4°C. Store at -20°C for one year. Avoid repeated freeze/thaw cycles.



Western Blotting

Image 1. Lane 1: Mouse brain lysates probed with EDG8 Polyclonal Antibody, Unconjugated at 1:300 overnight at 4°C. Followed by a conjugated secondary antibody at 1:20000 for 60 min at 37°C.

Flow Cytometry

Image 2. Mouse spleen cells probed with Rabbit Anti-EDG8 Polyclonal Antibody, PE Conjugated (ABIN1387928-PE) at 1:50 for 60 minutes (green) compared to control cells (blue).

Immunohistochemistry (Paraffin-embedded Sections)

Image 3. Paraformaldehyde-fixed, paraffin embedded rat spleen, Antigen retrieval by boiling in sodium citrate buffer (pH6.0) for 15min, Block endogenous peroxidase by 3% hydrogen peroxide for 20 minutes, Blocking buffer (normal goat serum) at 37°C for 30min, Antibody incubation with EDG8 Polyclonal Antibody, Unconjugated at 1:400 overnight at 4°C, followed by a conjugated secondary for 20 minutes and DAB staining.