

Datasheet for ABIN1387938  
**anti-CH25H antibody (AA 1-100)**[Go to Product page](#)

1 Image

1 Publication

## Overview

Quantity:	100 µL
Target:	CH25H
Binding Specificity:	AA 1-100
Reactivity:	Mouse
Host:	Rabbit
Clonality:	Polyclonal
Conjugate:	This CH25H antibody is un-conjugated
Application:	Western Blotting (WB)

## Product Details

Immunogen:	KLH conjugated synthetic peptide derived from human CH25H
Isotype:	IgG
Cross-Reactivity:	Human
Purification:	Purified by Protein A.

## Target Details

Target:	CH25H
Alternative Name:	CH25H ( <a href="#">CH25H Products</a> )
Background:	Synonyms: C25H, Cholesterol 25-hydroxylase, Cholesterol 25-monooxygenase, h25OH, CH25H Background: Catalyzes the formation of 25-hydroxycholesterol from cholesterol, leading to

## Target Details

repress cholesterol biosynthetic enzymes. May play an important role in regulating lipid metabolism by synthesizing a corepressor that blocks sterol regulatory element binding protein (SREBP) processing. In testis, production of 25-hydroxycholesterol by macrophages may play a role in Leydig cell differentiation.

Gene ID: 9023

UniProt: [O95992](#)

## Application Details

Application Notes: ELISA 1:500-1000  
IHC-P 1:200-400  
IHC-F 1:100-500  
IF(IHC-P) 1:50-200  
IF(IHC-F) 1:50-200  
IF(ICC) 1:50-200  
ICC 1:100-500

Restrictions: For Research Use only

## Handling

Format: Liquid

Concentration: 1 µg/µL

Buffer: 0.01M TBS( pH 7.4) with 1 % BSA, 0.02 % Proclin300 and 50 % Glycerol.

Preservative: ProClin

Precaution of Use: This product contains ProClin: a POISONOUS AND HAZARDOUS SUBSTANCE, which should be handled by trained staff only.

Storage: 4 °C,-20 °C

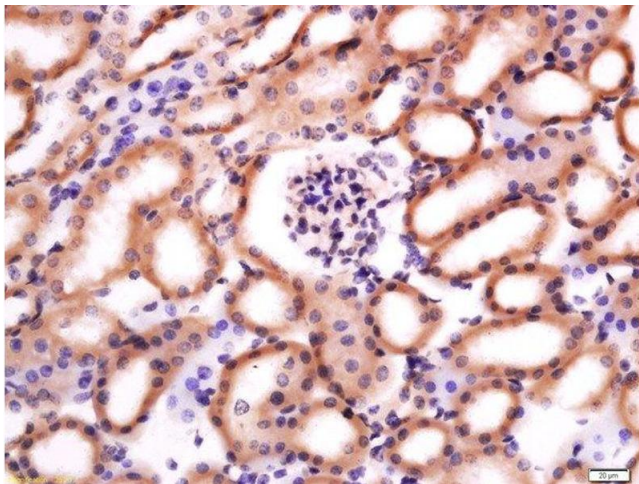
Storage Comment: Shipped at 4°C. Store at -20°C for one year. Avoid repeated freeze/thaw cycles.

Expiry Date: 12 months

## Publications

Product cited in: Mukherjee, Hough, Chattopadhyay, Navab, Fogelman, Meriwether, Williams, Bensinger, Moller, Faull, Lusi, Iruela-Arispe, Bostrom, Tontonoz, Reddy, Fogelman: "Transgenic tomatoes

expressing the 6F peptide and ezetimibe prevent diet-induced increases of IFN- $\beta$  and cholesterol 25-hydroxylase in jejunum." in: **Journal of lipid research**, Vol. 58, Issue 8, pp. 1636-1647, (2017) ([PubMed](#)).



### Immunohistochemistry (Paraffin-embedded Sections)

**Image 1.** Paraformaldehyde-fixed, paraffin embedded mouse kidney, Antigen retrieval by boiling in sodium citrate buffer (pH6) for 15min, Block endogenous peroxidase by 3% hydrogen peroxide for 30 minutes, Blocking buffer (normal goat serum) at 37°C for 20min, Antibody incubation with Rabbit Anti-CH25H Polyclonal Antibody, Unconjugated at 1:200 overnight at 4°C, followed by a conjugated secondary for 90 minutes and DAB staining.