

Datasheet for ABIN1387942
anti-ESR2 antibody (pSer87)



[Go to Product page](#)

1 Image

Overview

Quantity:	100 µL
Target:	ESR2
Binding Specificity:	pSer87
Reactivity:	Mouse
Host:	Rabbit
Clonality:	Polyclonal
Conjugate:	This ESR2 antibody is un-conjugated
Application:	Western Blotting (WB), ELISA

Product Details

Immunogen:	KLH conjugated synthetic phosphopeptide derived from human Estrogen Receptor beta around the phosphorylation site of Ser87 [HL(p-S)PL]
Isotype:	IgG
Cross-Reactivity:	Mouse
Predicted Reactivity:	Human,Rat,Sheep,Rabbit
Purification:	Purified by Protein A.

Target Details

Target:	ESR2
Alternative Name:	Estrogen Receptor beta (ESR2 Products)

Target Details

Background:	<p>Synonyms: Estrogen Receptor beta phospho S87, Estrogen Receptor beta phospho Ser87, p-ER betaS87, p-ER betaSer87, ER-betaSer87, ER-betaS87, Estrogen receptor-beta, ER BETA, ER-BETA, ER-beta, Erb, ESR 2, ESR 2, ESR B, ESR-B, ESR BETA, ESR-BETA, ESR2, ESR2, ESR2_HUMAN, ESRB, ESTRB, estrogen nuclear receptor beta variant a, estrogen nuclear receptor beta variant b, estrogen receptor 2 ER beta, Estrogen Receptor 2, Estrogen Receptor-2, estrogen receptor beta 4, Estrogen receptor beta, NR3A2, Nuclear receptor subfamily 3 group A member 2.</p> <p>Background: Estrogen receptors (ER) are members of the steroid/thyroid hormone receptor superfamily of ligand-activated transcription factors. Estrogen receptors, including ER alpha and ER beta, contain DNA binding and ligand binding domains and are critically involved in regulating the normal function of reproductive tissues. ER alpha and ER beta A have been shown to be differentially activated by various ligands. Receptor-ligand interactions trigger a cascade of events, including dissociation from heat shock proteins, receptor dimerization, phosphorylation and the association of the hormone activated receptor with specific regulatory elements in target genes. Evidence suggests that ER alpha and ER beta may be regulated by distinct mechanisms even though they share many functional characteristics.</p>
-------------	---

Gene ID:	2100
----------	------

Pathways:	Nuclear Receptor Transcription Pathway , EGFR Signaling Pathway , Intracellular Steroid Hormone Receptor Signaling Pathway , Steroid Hormone Mediated Signaling Pathway , Regulation of Intracellular Steroid Hormone Receptor Signaling
-----------	--

Application Details

Application Notes:	WB 1:300-5000 ELISA 1:500-1000
Restrictions:	For Research Use only

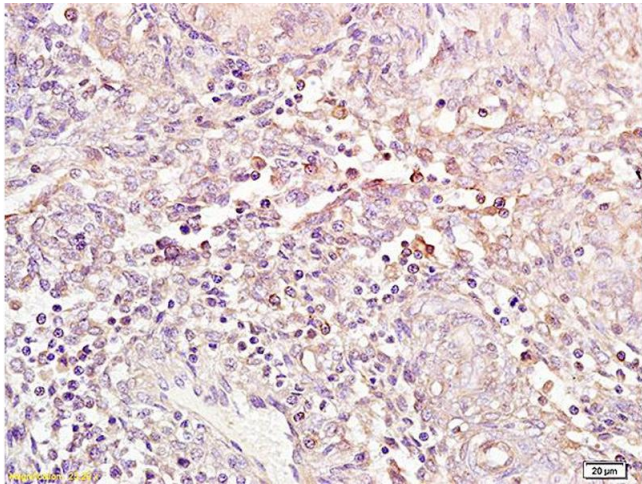
Handling

Format:	Liquid
Concentration:	1 µg/µL
Buffer:	0.01M TBS(pH 7.4) with 1 % BSA, 0.02 % Proclin300 and 50 % Glycerol.
Preservative:	ProClin
Precaution of Use:	This product contains ProClin: a POISONOUS AND HAZARDOUS SUBSTANCE, which should be

Handling

	handled by trained staff only.
Storage:	4 °C,-20 °C
Storage Comment:	Shipped at 4°C. Store at -20°C for one year. Avoid repeated freeze/thaw cycles.
Expiry Date:	12 months

Images



Immunohistochemistry

Image 1. Formalin-fixed and paraffin embedded human endometrial carcinoma tissue labeled with Anti phospho-ER-beta(ser87) Polyclonal Antibody,Unconjugated (ABIN1387942) at 1:200 followed by conjugation to the secondary antibody and DAB staining.