

Datasheet for ABIN1388018
anti-HEXDC antibody (AA 1-100)[Go to Product page](#)

1 Image

Overview

Quantity:	100 µL
Target:	HEXDC
Binding Specificity:	AA 1-100
Reactivity:	Human
Host:	Rabbit
Clonality:	Polyclonal
Conjugate:	This HEXDC antibody is un-conjugated
Application:	Western Blotting (WB), Immunofluorescence (Cultured Cells) (IF (cc)), Immunofluorescence (Paraffin-embedded Sections) (IF (p)), ELISA, Immunohistochemistry (Frozen Sections) (IHC (fro)), Immunohistochemistry (Paraffin-embedded Sections) (IHC (p))

Product Details

Immunogen:	KLH conjugated synthetic peptide derived from human HEXDC
Isotype:	IgG
Cross-Reactivity:	Human
Predicted Reactivity:	Mouse,Rat,Dog,Horse
Purification:	Purified by Protein A.

Target Details

Target:	HEXDC
---------	-------

Target Details

Alternative Name:	HEXDC (HEXDC Products)
Background:	<p>Synonyms: Beta hexosaminidase D, Beta N acetylhexosaminidase, FLJ23825, Hexosaminidase glycosyl hydrolase family 20 catalytic domain containing, hexosaminidase glycosyl hydrolase family 20, catalytic domain, Hexosaminidase D, Hexosaminidase domain containing protein, N acetyl beta galactosaminidase, HEXDC_HUMAN.</p> <p>Background: HEXDC, also known as hexosaminidase D, beta-hexosaminidase D, N-acetyl-beta-galactosaminidase, hexosaminidase domain-containing protein or beta-N-acetylhexosaminidase, is a 486 amino acid cytoplasmic and nuclear protein that has hexosaminidase activity and belongs to the glycosyl hydrolase 20 family. Existing as two alternatively spliced isoforms, HEXDC catalyzes the hydrolysis of non-reducing N-acetyl-D-hexosamine residues near the termini of N-acetyl-beta-D-hexosaminides. The gene encoding HEXDC maps to human chromosome 17, which comprises over 2.5 % of the human genome and encodes over 1,200 genes. Two key tumor suppressor genes are associated with chromosome 17, namely, p53 and BRCA1. Defects in p53 is associated with malignant cell growth and Li-Fraumeni syndrome. BRCA1 is directly involved in DNA repair and is recognized as a genetic determinant of early onset breast cancer and predisposition to cancers of the ovary, colon, prostate gland and fallopian tubes.</p>

Gene ID: 284004

Application Details

Application Notes:	WB 1:300-5000 ELISA 1:500-1000 IHC-P 1:200-400 IHC-F 1:100-500 IF(IHC-P) 1:50-200 IF(IHC-F) 1:50-200 IF(ICC) 1:50-200
--------------------	---

Restrictions: For Research Use only

Handling

Format:	Liquid
Concentration:	1 µg/µL
Buffer:	0.01M TBS(pH 7.4) with 1 % BSA, 0.02 % Proclin300 and 50 % Glycerol.

Handling

Preservative:	ProClin
Precaution of Use:	This product contains ProClin: a POISONOUS AND HAZARDOUS SUBSTANCE, which should be handled by trained staff only.
Storage:	4 °C,-20 °C
Storage Comment:	Shipped at 4°C. Store at -20°C for one year. Avoid repeated freeze/thaw cycles.
Expiry Date:	12 months

Images

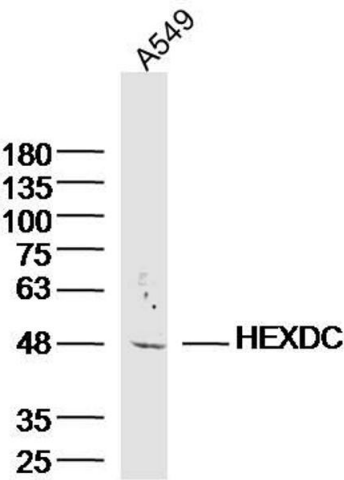


Image 1. A549 lysates probed with HEXDC Polyclonal Antibody, Unconjugated at 1:300 dilution and 4°C overnight incubation. Followed by conjugated secondary antibody incubation at 1:10000 for 60 min at 37°C.