

Datasheet for ABIN1388021
anti-BPIL1 antibody (AA 1-100)

2 Images

[Go to Product page](#)

Overview

Quantity:	100 µL
Target:	BPIL1 (BPIFB2)
Binding Specificity:	AA 1-100
Reactivity:	Human, Mouse
Host:	Rabbit
Clonality:	Polyclonal
Conjugate:	This BPIL1 antibody is un-conjugated
Application:	Western Blotting (WB), ELISA, Immunofluorescence (Cultured Cells) (IF (cc)), Immunofluorescence (Paraffin-embedded Sections) (IF (p)), Immunohistochemistry (Frozen Sections) (IHC (fro)), Immunohistochemistry (Paraffin-embedded Sections) (IHC (p))

Product Details

Immunogen:	KLH conjugated synthetic peptide derived from human BPIL1
Isotype:	IgG
Cross-Reactivity:	Human, Mouse
Predicted Reactivity:	Sheep,Pig,Horse
Purification:	Purified by Protein A.

Target Details

Target:	BPIL1 (BPIFB2)
---------	----------------

Target Details

Alternative Name:	BPIL1 (BPIFB2 Products)
Background:	<p>Synonyms: Bactericidal permeability increasing protein like 1, C20orf184, dJ726C3.2, Long palate lung and nasal epithelium carcinoma associated 2, Long palate lung and nasal epithelium carcinoma associated protein 2, LPLUNC2, RYSR.</p> <p>Background: Members of the bactericidal/permeability-increasing protein family have antimicrobial properties and bind lipophilic substances, therefore targeting gram-negative bacteria. The bactericidal permeability increasing protein (BPI) is an antibacterial and endotoxin-neutralizing molecule that is abundant in the granules of polymorphonuclear leukocytes (neutrophil granules). Sharing structural and sequence homologies with BPI, BPIL1 (bactericidal/permeability-increasing protein-like 1) is a 458 amino acid secreted protein that contains the family's common conserved feature of two cysteine residues that are critical for protein function. While BPIL1 is primarily expressed at low levels in tonsil tissue, it has been found to be upregulated in hypertrophic tonsils, suggesting that it may play a role in the pathogenesis of inflamed disease tissue.</p>
Gene ID:	80341

Application Details

Application Notes:	WB 1:300-5000 ELISA 1:500-1000 IHC-P 1:200-400 IHC-F 1:100-500 IF(IHC-P) 1:50-200 IF(IHC-F) 1:50-200 IF(ICC) 1:50-200
Restrictions:	For Research Use only

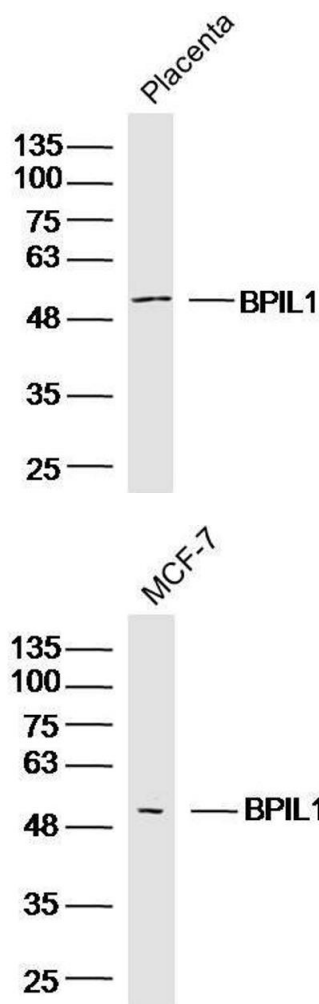
Handling

Format:	Liquid
Concentration:	1 µg/µL
Buffer:	0.01M TBS(pH 7.4) with 1 % BSA, 0.02 % Proclin300 and 50 % Glycerol.
Preservative:	ProClin
Precaution of Use:	This product contains ProClin: a POISONOUS AND HAZARDOUS SUBSTANCE, which should be

Handling

	handled by trained staff only.
Storage:	4 °C,-20 °C
Storage Comment:	Shipped at 4°C. Store at -20°C for one year. Avoid repeated freeze/thaw cycles.
Expiry Date:	12 months

Images



Western Blotting

Image 1. Mouse placenta lysates probed with BPIL1 Polyclonal Antibody, unconjugated at 1:300 overnight at 4°C followed by a conjugated secondary antibody for 60 minutes at 37°C.

Western Blotting

Image 2. MCF-7 Cell lysates probed with BPIL1 Polyclonal Antibody, unconjugated at 1:300 overnight at 4°C followed by a conjugated secondary antibody for 60 minutes at 37°C.