



[Go to Product page](#)

Datasheet for ABIN1388022
anti-BPIFC antibody (AA 131-230)

1 Image

Overview

Quantity:	100 µL
Target:	BPIFC
Binding Specificity:	AA 131-230
Reactivity:	Human
Host:	Rabbit
Clonality:	Polyclonal
Conjugate:	This BPIFC antibody is un-conjugated
Application:	Western Blotting (WB), ELISA

Product Details

Immunogen:	KLH conjugated synthetic peptide derived from human BPIL2
Isotype:	IgG
Cross-Reactivity:	Human
Predicted Reactivity:	Mouse,Rat,Cow,Sheep,Pig,Rabbit
Purification:	Purified by Protein A.

Target Details

Target:	BPIFC
Alternative Name:	BPIL2 (BPIFC Products)
Background:	Synonyms: BPIL 2, BPIL-2, bactericidal/permeability increasing protein like 2, BPC_HUMAN.

Target Details

Background: Members of the bactericidal/permeability-increasing protein family have antimicrobial properties and bind lipophilic substances, therefore targeting gram-negative bacteria. The bactericidal permeability increasing protein (BPI) is an antibacterial and endotoxin-neutralizing molecule that is abundant in the granules of polymorphonuclear leukocytes (neutrophil granules). Sharing structural and sequence homologies with BPI, BPIL2 (Bactericidal/permeability-increasing protein-like 2) is a 507 amino acid secreted protein that contains the family's common conserved feature of two cysteine residues that are critical for protein function. While BPIL2 is expressed in the basal layer of inflamed epidermis from psoriasis patients, it is not detected in normal skin.

Gene ID: 254240

UniProt: [Q8NFAQ6](#)

Application Details

Application Notes: WB 1:300-5000
ELISA 1:500-1000

Restrictions: For Research Use only

Handling

Format: Liquid

Concentration: 1 µg/µL

Buffer: 0.01M TBS(pH 7.4) with 1 % BSA, 0.02 % Proclin300 and 50 % Glycerol.

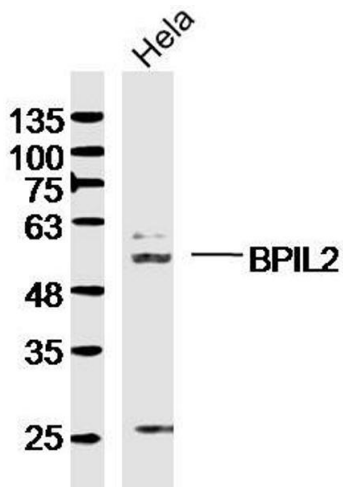
Preservative: ProClin

Precaution of Use: This product contains ProClin: a POISONOUS AND HAZARDOUS SUBSTANCE, which should be handled by trained staff only.

Storage: 4 °C,-20 °C

Storage Comment: Shipped at 4°C. Store at -20°C for one year. Avoid repeated freeze/thaw cycles.

Expiry Date: 12 months



Western Blotting

Image 1. HeLa lysates probed with BPIL2 Polyclonal Antibody, Unconjugated at 1:300 dilution and 4°C overnight incubation. Followed by conjugated secondary antibody incubation at 1:10000 for 60 min at 37°C.