

Datasheet for ABIN1388846
anti-MAP1B antibody (AA 451-550) (FITC)[Go to Product page](#)

1 Image

Overview

Quantity:	100 µL
Target:	MAP1B
Binding Specificity:	AA 451-550
Reactivity:	Human, Mouse, Rat
Host:	Rabbit
Clonality:	Polyclonal
Conjugate:	This MAP1B antibody is conjugated to FITC
Application:	Flow Cytometry (FACS), Immunofluorescence (Cultured Cells) (IF (cc)), Immunofluorescence (Paraffin-embedded Sections) (IF (p))

Product Details

Immunogen:	KLH conjugated synthetic peptide derived from human MAP1B
Isotype:	IgG
Cross-Reactivity:	Human, Mouse, Rat
Predicted Reactivity:	Dog,Cow,Sheep,Pig,Horse,Rabbit
Purification:	Purified by Protein A.

Target Details

Target:	MAP1B
Alternative Name:	MAP1B (MAP1B Products)

Target Details

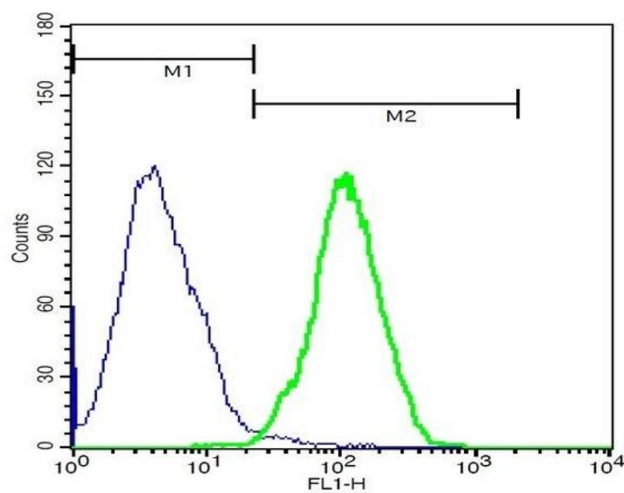
Background:	Synonyms: MAP5, FUTSCH, PPP1R102, Microtubule-associated protein 1B, MAP-1B, MAP1B Background: Facilitates tyrosination of alpha-tubulin in neuronal microtubules (By similarity). Phosphorylated MAP1B may play a role in the cytoskeletal changes that accompany neurite extension. Possibly MAP1B binds to at least two tubulin subunits in the polymer, and this bridging of subunits might be involved in nucleating microtubule polymerization and in stabilizing microtubules. Acts as a positive cofactor in DAPK1-mediated autophagic vesicle formation and membrane blebbing.
Gene ID:	4131
UniProt:	P46821
Pathways:	Microtubule Dynamics, Regulation of Cell Size

Application Details

Application Notes:	FCM 1:20-100 IF(IHC-P) 1:50-200 IF(IHC-F) 1:50-200 IF(ICC) 1:50-200
Restrictions:	For Research Use only

Handling

Format:	Liquid
Concentration:	1 µg/µL
Buffer:	Aqueous buffered solution containing 0.01M TBS (pH 7.4) with 1 % BSA, 0.03 % Proclin300 and 50 % Glycerol.
Preservative:	ProClin
Precaution of Use:	This product contains ProClin: a POISONOUS AND HAZARDOUS SUBSTANCE, which should be handled by trained staff only.
Storage:	-20 °C
Storage Comment:	Store at -20°C. Aliquot into multiple vials to avoid repeated freeze-thaw cycles.
Expiry Date:	12 months



Flow Cytometry

Image 1. Hela cells probed with Rabbit Anti-MAP1B Polyclonal Antibody, FITC Conjugated (ABIN1388846) at 1:100 for 40 minutes (green) compared to control cells (blue).