

Datasheet for ABIN1429575

anti-P2RY10 antibody (AA 151-250) (PE)**2** Images[Go to Product page](#)

Overview

Quantity:	100 µL
Target:	P2RY10
Binding Specificity:	AA 151-250
Reactivity:	Human, Mouse
Host:	Rabbit
Clonality:	Polyclonal
Conjugate:	This P2RY10 antibody is conjugated to PE
Application:	Western Blotting (WB), Flow Cytometry (FACS)

Product Details

Immunogen:	KLH conjugated synthetic peptide derived from human P2Y10
Isotype:	IgG
Cross-Reactivity:	Human, Mouse
Predicted Reactivity:	Rat,Horse,Rabbit
Purification:	Purified by Protein A.

Target Details

Target:	P2RY10
Alternative Name:	P2Y10 (P2RY10 Products)
Background:	Synonyms: G protein coupled purinergic receptor P2Y10, P2ry10, P2Y like receptor, P2Y

Target Details

purinoceptor 10, P2Y-like receptor, P2Y10, P2Y10_HUMAN, Purinergic receptor P2Y G protein coupled 10, Putative P2Y purinoceptor 10.

Background: Nucleotides are important extracellular signaling molecules that mediate several events, such as cell proliferation, differentiation, chemotaxis and cytokine release. The P2 receptor family is activated by the binding of nucleotides and is divided into two subfamilies, designated P2X and P2Y. The P2Y receptor family are G protein-coupled receptors that mediate the effects of extracellular nucleotides, primarily through the activation of phospholipase C (PLC). To some extent, the P2Y receptors can also activate potassium channels or, alternatively, inhibit adenylate cyclase and N-type calcium channels in response to extracellular nucleotides. P2Y10 (purinergic receptor P2Y, G-protein coupled, 10), also known as P2RY10, is a 339 amino acid multi-pass membrane protein that is thought to act as a receptor for purines coupled to G-proteins. P2Y10 is found at low levels in blood leukocytes and is upregulated during promyelocytic cell differentiation.

Gene ID: 27334

UniProt: [O00398](#)

Application Details

Application Notes: FCM 1:20-100

Restrictions: For Research Use only

Handling

Format: Liquid

Concentration: 1 µg/µL

Buffer: Aqueous buffered solution containing 0.01M TBS (pH 7.4) with 1 % BSA, 0.03 % Proclin300 and 50 % Glycerol.

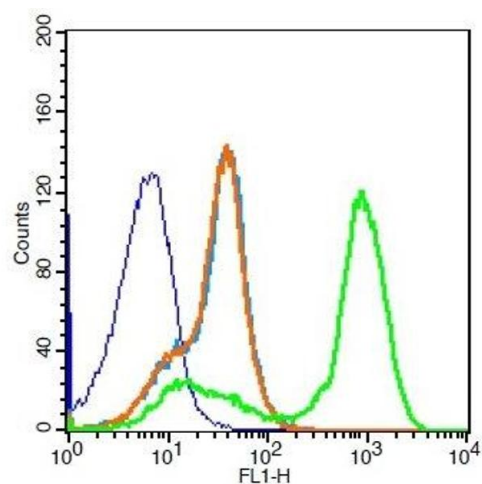
Preservative: ProClin

Precaution of Use: This product contains ProClin: a POISONOUS AND HAZARDOUS SUBSTANCE, which should be handled by trained staff only.

Storage: -20 °C

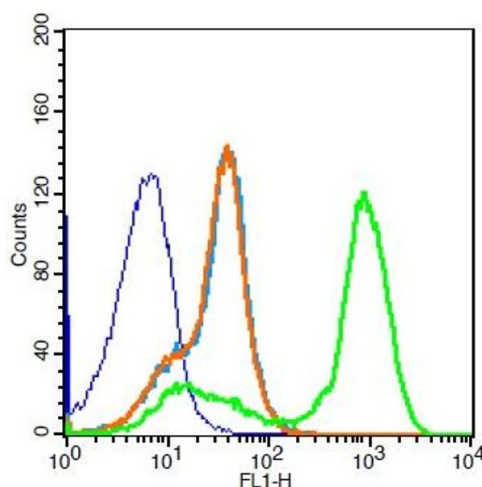
Storage Comment: Store at -20°C. Aliquot into multiple vials to avoid repeated freeze-thaw cycles.

Expiry Date: 12 months



Flow Cytometry

Image 1. Mouse Spleen Cells probed with P2Y10 Polyclonal Antibody, PE Conjugated (green) at 1:100 for 30 minutes compared to unstained cells (blue), secondary only (light blue), and isotype control (orange).



Flow Cytometry

Image 2. Mouse Spleen Cells probed with P2Y10 Polyclonal Antibody, PE Conjugated (bs-12070R-PE)(green) at 1:100 for 30 minutes compared to unstained cells (blue), secondary only (light blue), and isotype control (orange).