

Datasheet for ABIN1439993  
**anti-EEA1 antibody (C-Term)**[Go to Product page](#)

## 4 Images

## Overview

Quantity:	600 µg
Target:	EEA1
Binding Specificity:	C-Term
Reactivity:	Human, Mouse, Rat, Hamster, Dog, Horse, Rabbit, Cow, Monkey, Pig, Guinea Pig, Avian, Cat, Chicken, Donkey, Goat, Sheep
Host:	Goat
Clonality:	Polyclonal
Conjugate:	This EEA1 antibody is un-conjugated
Application:	Western Blotting (WB), Immunofluorescence (IF)

## Product Details

Immunogen:	Purified recombinant peptide within residues 1230 aa to the C-terminus of human EEA1 produced in E. coli.
Isotype:	IgG
Specificity:	Detects a band of 180 kDa by Western blot in the following human, mouse and rat whole cell lysates.
Characteristics:	Early Endosome Antigen 1
Purification:	epitope affinity purified

## Target Details

Target:	EEA1
---------	------

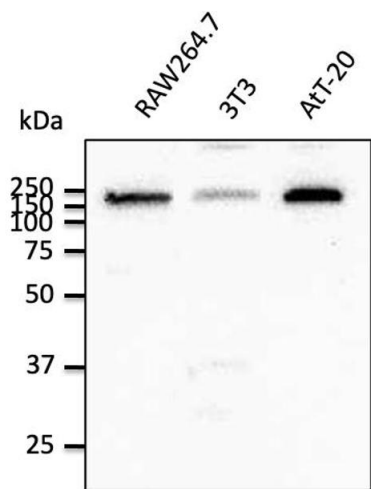
## Target Details

Alternative Name:	EEA1 ( <a href="#">EEA1 Products</a> )
Background:	<p>EEA1 is Early Endosome Antigen 1 protein that binds phospholipid vesicles containing phosphatidylinositol 3-phosphate, which is necessary for endosomal trafficking.</p> <p>Synonyms: early endosome antigen 1, 162kD, early endosome-associated protein, endosome-associated protein p162, zinc finger FYVE domain-containing protein 2 antibody.</p> <p>Ensembl identifier: ENSG00000102189</p>
Pathways:	<a href="#">Toll-Like Receptors Cascades</a>

## Application Details

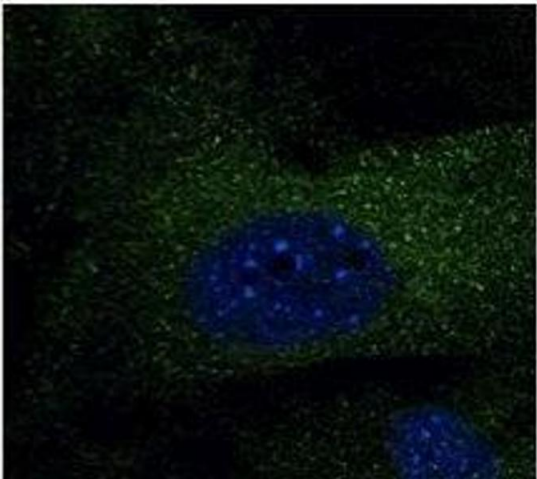
Restrictions:	For Research Use only
Handling	
Concentration:	3 mg/mL
Buffer:	Polyclonal antibody supplied as a 200 µL (3mg/mL) aliquot in PBS, 20 % glycerol and 0.05 % sodium azide
Handling Advice:	The antibody solution should be gently mixed before use.
Storage:	4 °C,-20 °C
Storage Comment:	For continuous use, store at 2-8 deg,C for one-two days. For extended storage, store in -20 deg,C freezer. Working dilution samples should be discarded if not used within 12 hours.

## Images



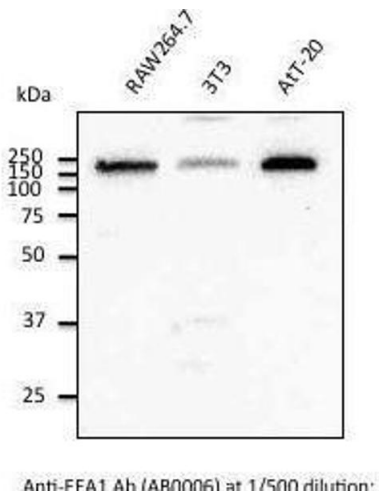
### Western Blotting

Image 1.



**Immunofluorescence**

**Image 2.** Immunostaining of Hepa1-6 cells With EEAI antibody at 1/50 dilution.



**Western Blotting**

**Image 3.** Immunostaining of Hepa1-6 cells With EEAI antibody at 1/50 dilution.

Please check the [product details page](#) for more images. Overall 4 images are available for ABIN1439993.