

Datasheet for ABIN1439994
anti-RAB5 antibody (C-Term)

7 Images

[Go to Product page](#)

Overview

Quantity:	800 µg
Target:	RAB5 (RAB5A)
Binding Specificity:	C-Term
Reactivity:	Human, Mouse, Rat, Cow, Monkey, Dog, Horse, Sheep, Guinea Pig, Rabbit, Pig, Hamster, Chicken, Cat, Donkey, Goat, Avian
Host:	Goat
Clonality:	Polyclonal
Application:	Western Blotting (WB), Immunofluorescence (IF)

Product Details

Immunogen:	Purified recombinant peptide derived from within residues 115 aa to the C-terminus of mouse Rab5a produced in E. coli.
Isotype:	IgG
Specificity:	Detects Rab5a protein by Western blot in cell lysates of transfected cells with GFP-Rab5a. This Ab is specific for Rab5a, it does not recognize Rab5b and Rab5c.
Characteristics:	RAB5A, member RAS oncogene family
Purification:	epitope affinity purified

Target Details

Target:	RAB5 (RAB5A)
Alternative Name:	Rab5a (RAB5A Products)

Target Details

Background:	Rab5a belongs to the small GTPase superfamily, Rab family. Rab5a is an Early Endosome Marker and functions as a key regulator of vesicular trafficking during early endocytosis. Synonyms: RAB5A, RAS-associated protein RAB5A, ras-related protein Rab-5A antibody. Ensembl identifier: ENSG00000144566
-------------	--

Pathways:	Smooth Muscle Cell Migration , Regulation of long-term Neuronal Synaptic Plasticity
-----------	---

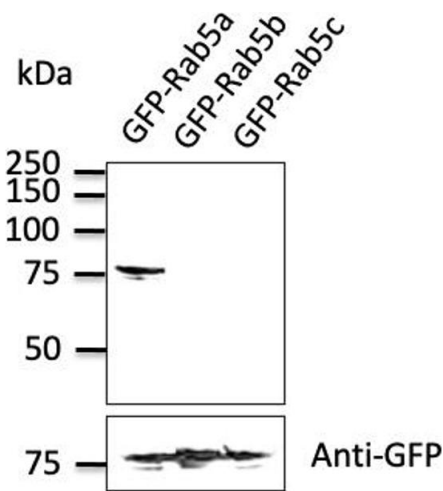
Application Details

Restrictions:	For Research Use only
---------------	-----------------------

Handling

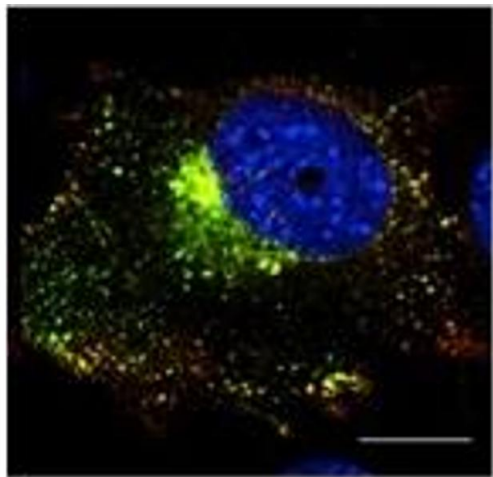
Concentration:	4 mg/mL
Buffer:	Polyclonal antibody supplied as a 200 µL (4 mg/mL) aliquot in PBS, 20 % glycerol and 0.05 % sodium azide
Handling Advice:	The antibody solution should be gently mixed before use.
Storage:	4 °C, -20 °C
Storage Comment:	For continuous use, store at 2-8 deg,C for one-two days. For extended storage, store in -20 deg,C freezer. Working dilution samples should be discarded if not used within 12 hours.

Images



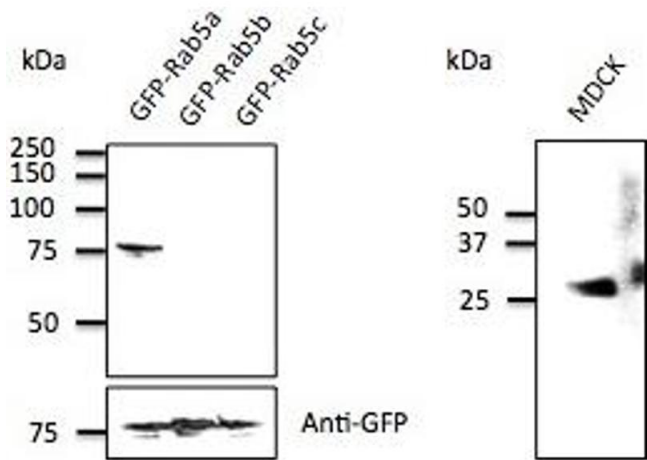
Western Blotting

Image 1.



Immunofluorescence

Image 2. Immunofluorescence — anti-Rab5a Ab in transduced Hepa1-6 cells with Ad GFP-Rab5a at 1/50 dilution; cells were fixed with 4% of PFA;



Western Blotting

Image 3. Anti-Rab5a Ab at 1/500 dilution; 293 cells transfected with GFP-Rab5; at 50 µg per lane; rabbit polyclonal to goat IgG (HRP) at L/IC,T0 dilution;

Please check the [product details page](#) for more images. Overall 7 images are available for ABIN1439994.