

Datasheet for ABIN1439995
anti-RAB5B antibody (C-Term)

7 Images

[Go to Product page](#)

Overview

Quantity:	800 µg
Target:	RAB5B
Binding Specificity:	C-Term
Reactivity:	Human, Mouse, Rat, Dog, Horse, Cow, Rabbit, Guinea Pig, Monkey, Hamster, Pig, Cat, Chicken, Donkey, Goat, Sheep, Avian
Host:	Goat
Clonality:	Polyclonal
Conjugate:	This RAB5B antibody is un-conjugated
Application:	Western Blotting (WB), Immunofluorescence (IF)

Product Details

Immunogen:	Purified recombinant peptide derived from within residues 115 aa to the C-terminus of mouse Rab5b produced in E. coli.
Isotype:	IgG
Specificity:	Detects Rab5b protein by Western blot in cell lysates of transfected cells with GFP-Rab5b. This Ab is specific for Rab5b, it does not recognize Rab5a and Rab5c.
Characteristics:	RAB5B, member RAS oncogene family
Purification:	epitope affinity purified

Target Details

Target:	RAB5B
---------	-------

Target Details

Alternative Name:	Rab5b (RAB5B Products)
Background:	<p>Rab5b belongs to the small GTPase superfamily, Rab family. Rab5b is an Early Endosome Marker and functions as a key regulator of vesicular trafficking during early endocytosis.</p> <p>Synonyms: RAB5B, RAS-associated protein RAB5B, ras-related protein Rab-5B antibody. .</p> <p>Ensembl identifier: ENSG00000111540</p>

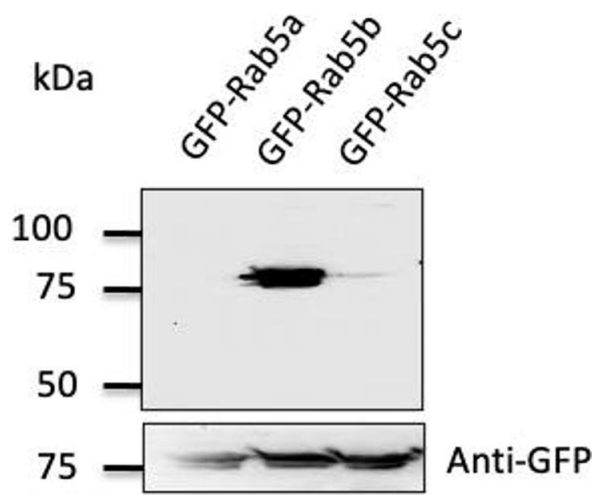
Application Details

Restrictions:	For Research Use only
---------------	-----------------------

Handling

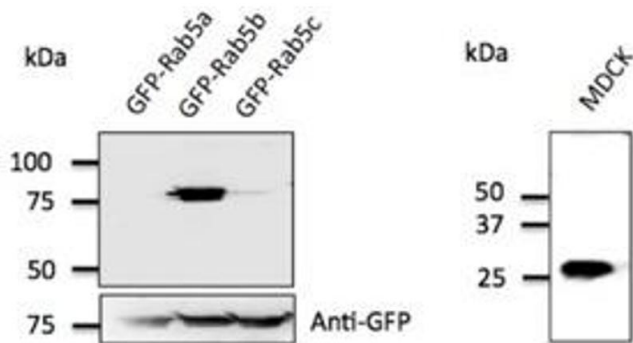
Concentration:	4 mg/mL
Buffer:	Polyclonal antibody supplied as a 200 µL (4 mg/mL) aliquot in PBS, 20 % glycerol and 0.05 % sodium azide
Handling Advice:	The antibody solution should be gently mixed before use.
Storage:	4 °C,-20 °C
Storage Comment:	For continuous use, store at 2-8 deg,C for one-two days. For extended storage, store in -20 deg,C freezer. Working dilution samples should be discarded if not used within 12 hours.

Images



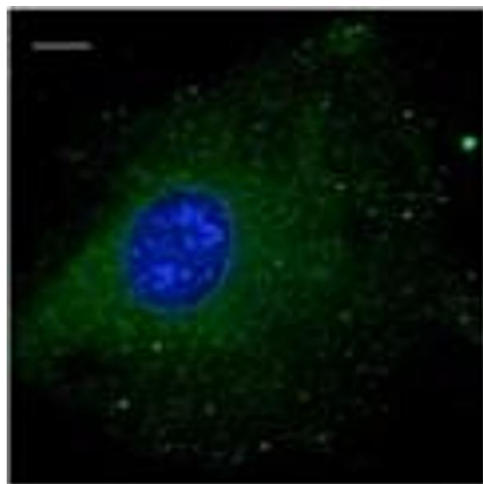
Western Blotting

Image 1.



Western Blotting

Image 2. Anti-Rab5b Ab at 1/500 dilution; 293 cells transfected with GFP-Rab5; lysates at 50 µg per lane; rabbit polyclonal to goat IgG (HRP) at 1/10,000 dilution;



Immunofluorescence

Image 3. Immunofluorescence — anti-Rab5b Ab using B6-RPE07 cells at 1/100 dilution;

Please check the [product details page](#) for more images. Overall 7 images are available for ABIN1439995.