

Datasheet for ABIN1439997  
**anti-RAB14 antibody (C-Term)**

## 5 Images

[Go to Product page](#)

## Overview

Quantity:	400 µg
Target:	RAB14
Binding Specificity:	C-Term
Reactivity:	Human, Rat, Mouse, Pig, Chicken, Monkey, Dog, Cow, Goat, Horse, Guinea Pig, Rabbit, Hamster, Avian, Cat, Donkey, Sheep
Host:	Goat
Clonality:	Polyclonal
Conjugate:	This RAB14 antibody is un-conjugated
Application:	Western Blotting (WB), Immunofluorescence (IF)

## Product Details

Immunogen:	Purified recombinant peptide derived from within residues 110 aa to the C-terminus of mouse Rab14 produced in E. coli.
Isotype:	IgG
Specificity:	Detects Rab14 by Western blot in transfected cells with GFP-Rab14.
Characteristics:	RAB14, member RAS oncogene family
Purification:	epitope affinity purified

## Target Details

Target:	RAB14
---------	-------

## Target Details

Alternative Name: Rab14 ([RAB14 Products](#))

Background: RAB14 belongs to the large RAB family of low molecular weight GTPases that are involved in intracellular membrane trafficking. This protein is expressed at high levels in kidney, lung, brain, spleen and thymus and it is thought to be involved in vesicular trafficking and neurotransmitter release. It is also involved in the biosynthetic/recycling pathway between the Golgi and endosomal compartments.

Synonyms: F protein-binding protein 1, bA165P4.3 (member RAS oncogene family), ras-related protein Rab-14, small GTP binding protein Rab14 antibody.

Ensembl identifier: ENSG00000119396

Pathways: [Asymmetric Protein Localization](#), [SARS-CoV-2 Protein Interactome](#)

## Application Details

Restrictions: For Research Use only

## Handling

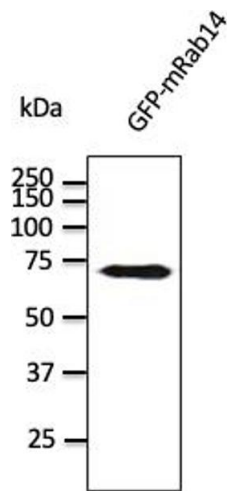
Concentration: 2 mg/mL

Buffer: Polyclonal antibody supplied as a 200 µL (2 mg/mL) aliquot in PBS, 20 % glycerol and 0.05 % sodium azide

Handling Advice: The antibody solution should be gently mixed before use.

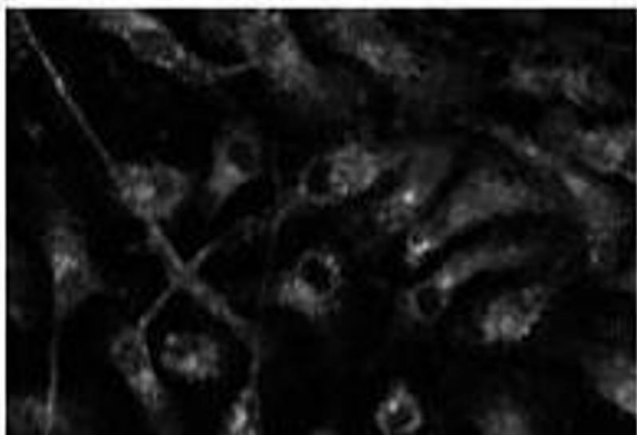
Storage: 4 °C, -20 °C

Storage Comment: For continuous use, store at 2-8 deg,C for one-two days. For extended storage, store in -20 deg,C freezer. Working dilution samples should be discarded if not used within 12 hours.



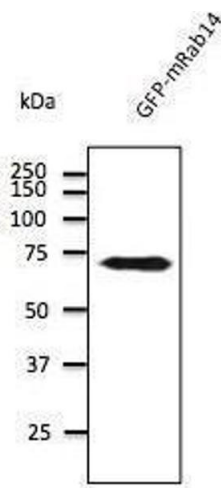
### Western Blotting

Image 1.



### Immunofluorescence

**Image 2.** Anti-Rabia Ab at 1/500 dilution, 293 cells transfected with GFP-Rab7a, 293FT, Di7, At-T2 and 3T3, lysates at 100 per lane, rabbit polyclonal to goat  $\mu$ g (HRP) at 1/10,000 dilution,



### Immunofluorescence

**Image 3.** Anti-Rabia Ab at 1/500 dilution, 293 cells transfected with GFP-Rab7a, 293FT, Di7, At-T2 and 3T3, lysates at 100 per lane, rabbit polyclonal to goat  $\mu$ g (HRP) at 1/10,000 dilution,

Please check the [product details page](#) for more images. Overall 5 images are available for ABIN1439997.