

Datasheet for ABIN1440000  
**anti-RAB27A antibody (C-Term)**[Go to Product page](#)

3 Images

3 Publications

## Overview

Quantity:	200 µg
Target:	RAB27A
Binding Specificity:	C-Term
Reactivity:	Human, Mouse, Rat, Sheep, Cow, Goat, Horse, Dog, Rabbit, Guinea Pig, Monkey, Chicken, Pig, Cat, Donkey, Hamster, Avian
Host:	Goat
Clonality:	Polyclonal
Conjugate:	This RAB27A antibody is un-conjugated
Application:	Western Blotting (WB), Immunofluorescence (IF), Immunohistochemistry (Paraffin-embedded Sections) (IHC (p)), Immunohistochemistry (Frozen Sections) (IHC (fro))

## Product Details

Immunogen:	Purified recombinant peptide derived from within residues 120 aa to the C-terminus of mouse Rab27a produced in E. coli.
Isotype:	IgG
Specificity:	Detects Rab27a by Western blot in the following human, rat and mouse whole cell lysates and transfected cells with GFP-Rab27a. This antibody also recognizes Rab27b protein.
Characteristics:	RAB27A, member RAS oncogene family
Purification:	epitope affinity purified

## Target Details

Target:	RAB27A
Alternative Name:	Rab27a ( <a href="#">RAB27A Products</a> )
Background:	<p>Rab27a belongs to the small GTPase superfamily, Rab family. The protein is membrane-bound and involved in lysosome-related vesicle transport and small GTPase mediated signal transduction.</p> <p>Synonyms: GS2, GTP-binding protein Ram, rab-27, ras-related protein Rab-27A, RAB27, RAM.</p> <p>Ensembl identifier: ENSG00000069974</p>
Pathways:	<a href="#">Peptide Hormone Metabolism</a>

## Application Details

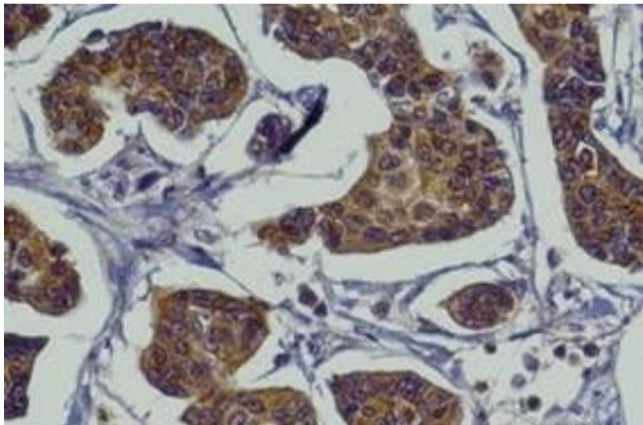
Restrictions:	For Research Use only
---------------	-----------------------

## Handling

Concentration:	1 mg/mL
Buffer:	Polyclonal antibody supplied as a 200 µL (1 mg/mL) aliquot in PBS, 20 % glycerol and 0.05 % sodium azide
Handling Advice:	The antibody solution should be gently mixed before use.
Storage:	4 °C, -20 °C
Storage Comment:	For continuous use, store at 2-8 deg,C for one-two days. For extended storage, store in -20 deg,C freezer. Working dilution samples should be discarded if not used within 12 hours.

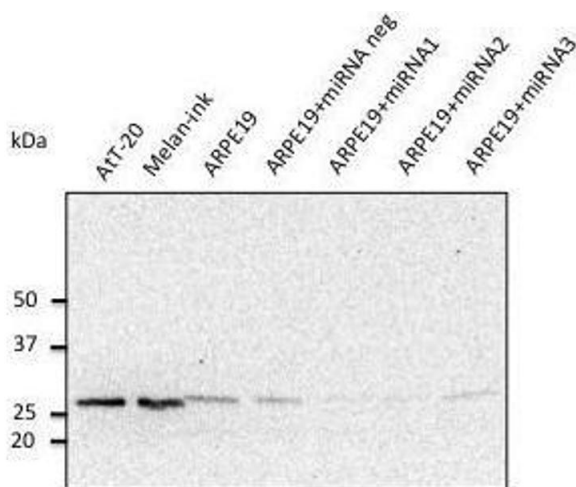
## Publications

Product cited in:	<p>Rodrigues, Matafome, Sereno, Almeida, Castelhana, Gamas, Neves, Gonçalves, Carvalho, Arslanagic, Wilcken, Fonseca, Simões, Conde, Castelo-Branco, Seiça: "Methylglyoxal-induced glycation changes adipose tissue vascular architecture, flow and expansion, leading to insulin resistance." in: <b>Scientific reports</b>, Vol. 7, Issue 1, pp. 1698, (2018) (<a href="#">PubMed</a>).</p> <p>Thieleke-Matos, Lopes da Silva, Cabrita-Santos, Portal, Rodrigues, Zuzarte-Luis, Ramalho, Futter, Mota, Barral, Seabra: "Host cell autophagy contributes to Plasmodium liver development." in: <b>Cellular microbiology</b>, Vol. 18, Issue 3, pp. 437-50, (2016) (<a href="#">PubMed</a>).</p>
-------------------	--



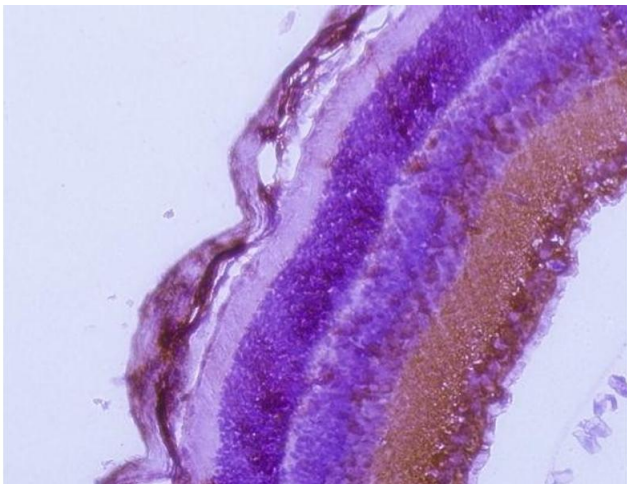
Immunohistochemistry

Image 1.



Western Blotting

**Image 2.** Anti.Rab8b Ab at 1/500 ditution, lysates at 20 per lane, rabbit polyclonal to goat (CC, IHRP) at 1/10,000 dilution,



Immunohistochemistry

Image 3.