

Datasheet for ABIN1440003  
**anti-RAB25 antibody (C-Term)**

## 4 Images

[Go to Product page](#)

## Overview

Quantity:	400 µg
Target:	RAB25
Binding Specificity:	C-Term
Reactivity:	Human, Mouse, Rat, Dog, Horse, Rabbit, Cow, Guinea Pig, Monkey, Avian, Cat, Chicken, Donkey, Goat, Hamster, Pig, Sheep
Host:	Goat
Clonality:	Polyclonal
Conjugate:	This RAB25 antibody is un-conjugated
Application:	Western Blotting (WB), Immunohistochemistry (Paraffin-embedded Sections) (IHC (p)), Immunofluorescence (IF), Immunohistochemistry (Frozen Sections) (IHC (fro))

## Product Details

Immunogen:	Purified recombinant peptide derived from within residues 120 aa to the C-terminus of mouse Rab25 produced in E. coli.
Isotype:	IgG
Specificity:	Detects Rab25 by Western blot in transfected cells with GFP-Rab25.
Characteristics:	RAB25, member RAS oncogene family
Purification:	epitope affinity purified

## Target Details

Target:	RAB25
---------	-------

## Target Details

Alternative Name: Rab25 ([RAB25 Products](#))

Background: RAB25 belongs to the large RAB family of low molecular weight GTPases that are involved in intracellular membrane trafficking. Members of the RAB11 subfamily, including RAB25, control the return of internalized membrane-associated moieties to the cell surface.

Synonyms: CATX-8, RAB11C antibody.

Ensembl identifier: ENSG00000132698

## Application Details

Restrictions: For Research Use only

## Handling

Concentration: 2 mg/mL

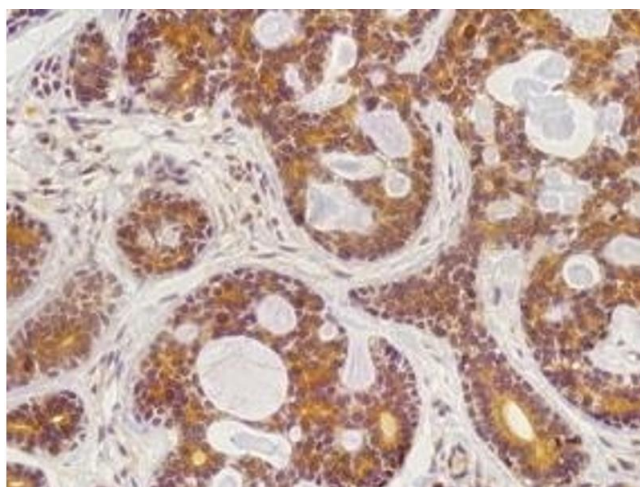
Buffer: Polyclonal antibody supplied as a 200 µL (2 mg/mL) aliquot in PBS, 20 % glycerol and 0.05 % sodium azide

Handling Advice: The antibody solution should be gently mixed before use.

Storage: 4 °C, -20 °C

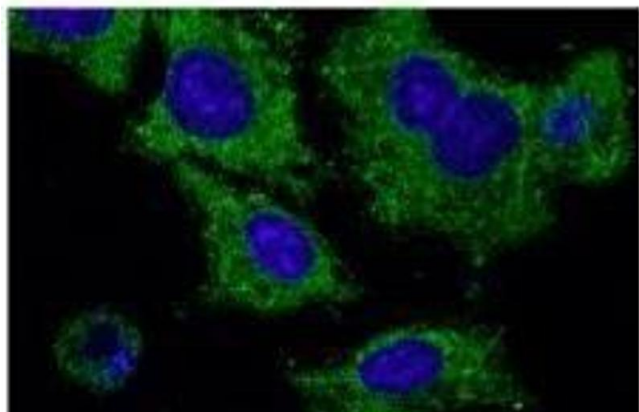
Storage Comment: For continuous use, store at 2-8 deg,C for one-two days. For extended storage, store in -20 deg,C freezer. Working dilution samples should be discarded if not used within 12 hours.

## Images



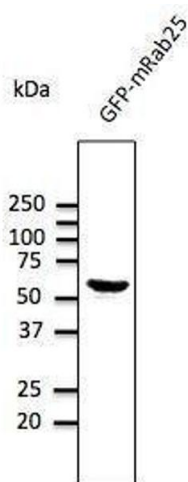
### Immunohistochemistry

Image 1.



#### Immunofluorescence

**Image 2.** Anti-Rab2S Ab at 1/1,000 dilution, HEK293 cells transfected With GFP-Rab25, rabbit polyclonal to goat Ig (HRP) at 1/10,000 dilution,



#### Western Blotting

**Image 3.** Anti-Rab2S Ab at 1/1,000 dilution, HEK293 cells transfected With GFP-Rab25, rabbit polyclonal to goat Ig (HRP) at 1/10,000 dilution,

Please check the [product details page](#) for more images. Overall 4 images are available for ABIN1440003.