

Datasheet for ABIN1440004  
**anti-RAB32 antibody (C-Term)**

## 4 Images

[Go to Product page](#)

## Overview

Quantity:	800 µg
Target:	RAB32
Binding Specificity:	C-Term
Reactivity:	Human, Mouse, Rat, Guinea Pig, Sheep, Rabbit, Pig, Monkey, Horse, Hamster, Goat, Donkey, Dog, Cow, Chicken, Cat, Avian
Host:	Goat
Clonality:	Polyclonal
Conjugate:	This RAB32 antibody is un-conjugated
Application:	Western Blotting (WB), Immunofluorescence (IF)

## Product Details

Immunogen:	Purified recombinant peptide derived from within residues 120 aa to the C-terminus of mouse Rab27a produced in E. coli.
Isotype:	IgG
Specificity:	Detects an endogenous band by Western blot in Melan-ink and 3T3 cell line lysates (approximately 30 kDa) and in transfected cells with GFP-Rab32 cds.
Characteristics:	RAB32, member RAS oncogene family
Purification:	epitope affinity purified

## Target Details

Target:	RAB32
---------	-------

## Target Details

Alternative Name:	Rab32 ( <a href="#">RAB32 Products</a> )
Background:	Rab32 belongs to the small GTPase superfamily, Rab family. The protein is membrane-bound and involved in intracellular vesicle transport and small GTPase mediated signal transduction. Ensembl identifier: ENSG00000118508

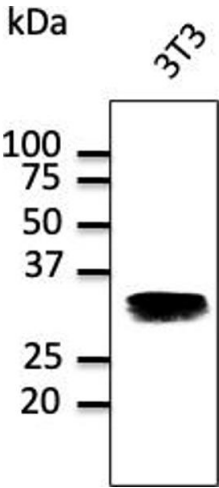
## Application Details

Restrictions:	For Research Use only
---------------	-----------------------

## Handling

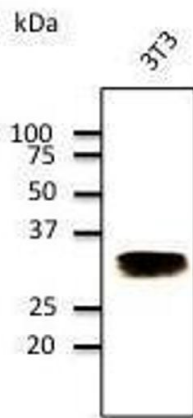
Concentration:	4 mg/mL
Buffer:	Polyclonal antibody supplied as a 200 µL (4 mg/mL) aliquot in PBS, 20 % glycerol and 0.05 % sodium azide
Handling Advice:	The antibody solution should be gently mixed before use.
Storage:	4 °C,-20 °C
Storage Comment:	For continuous use, store at 2-8 deg,C for one-two days. For extended storage, store in -20 deg,C freezer. Working dilution samples should be discarded if not used within 12 hours.

## Images



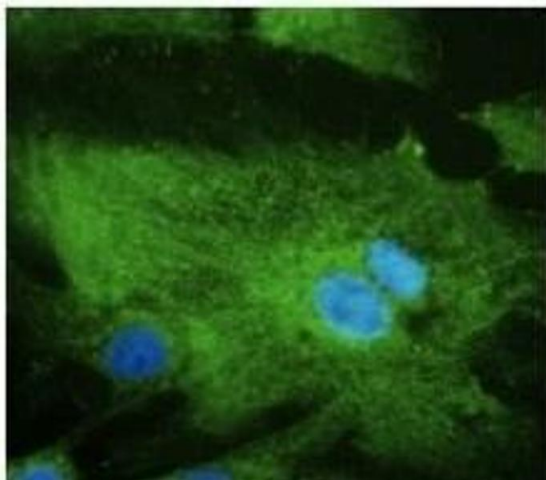
### Western Blotting

Image 1.



#### Western Blotting

**Image 2.** Anti-Rab11 Ab at 1/500 dilution, Hepa cell line lysates at 100 µg per lane, rabbit polyclonal to goat IgG (HRP) at 1/10,000 dilution,



#### Immunofluorescence

**Image 3.** Anti-Rab11 Ab at 1/500 dilution, Hepa cell line lysates at 100 µg per lane, rabbit polyclonal to goat IgG (HRP) at 1/10,000 dilution,

Please check the [product details page](#) for more images. Overall 4 images are available for ABIN1440004.