

Datasheet for ABIN1440017
anti-CHM antibody (AA 1-80)[Go to Product page](#)

1 Image

Overview

Quantity:	600 µg
Target:	CHM
Binding Specificity:	AA 1-80
Reactivity:	Human, Rat, Mouse, Horse, Cow, Pig, Dog, Rabbit, Donkey, Goat, Sheep, Guinea Pig, Hamster, Cat, Monkey, Chicken, Avian
Host:	Goat
Clonality:	Polyclonal
Application:	Western Blotting (WB)

Product Details

Immunogen:	Purified recombinant peptide derived from within residues 1-80 aa at the N-terminus of rat Rep1 produced in E. coli.
Isotype:	IgG
Specificity:	Detects endogenous Rep1 and in transfected cells by Western blot.
Characteristics:	Choroideremia (Rab escort protein 1)
Purification:	epitope affinity purified

Target Details

Target:	CHM
Alternative Name:	REP1 (CHM Products)

Target Details

Background:	<p>REP1 is the component A of the RAB geranylgeranyl transferase holoenzyme. In the dimeric holoenzyme, this subunit binds unprenylated Rab GTPases and then presents them to the catalytic Rab GGTase subunit for the geranylgeranyl transfer reaction. Mutations in this protein are a cause of a type of retinal degeneration, called choroideremia.</p> <p>Synonyms: CHM, choroideraemia protein, DXS540, GGTA, HSD-32, RP1-93L7.1, rab escort protein 1, Rab geranylgeranyltransferase component A, REP-1, TCD antibody.</p> <p>Ensembl identifier: ENSG00000188419</p>
-------------	--

Pathways:	Sensory Perception of Sound
-----------	---

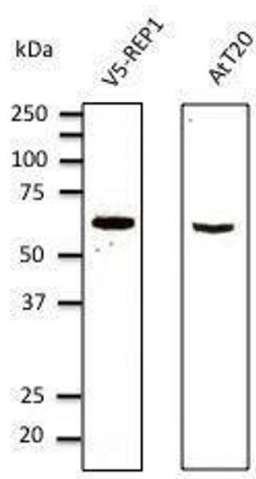
Application Details

Restrictions:	For Research Use only
---------------	-----------------------

Handling

Concentration:	3 mg/mL
Buffer:	Polyclonal antibody supplied as a 200 µL (3 mg/mL) aliquot in PBS, 20 % glycerol and 0.05 % sodium azide
Handling Advice:	The antibody solution should be gently mixed before use.
Storage:	4 °C, -20 °C
Storage Comment:	For continuous use, store at 2-8 deg,C for one-two days. For extended storage, store in -20 deg,C freezer. Working dilution samples should be discarded if not used within 12 hours.

Images



Western Blotting

Image 1. Anti-myc tag Ab at 1/1,000 dilution, 293 cells transfected With myc-mCherry (red fluorescent protein), rabbit polyclonal to goat IgG (HRP) at 1/10,000 dilution,