



[Go to Product page](#)

Datasheet for ABIN1440021
anti-RAB28 antibody (C-Term)

2 Images

Overview

Quantity:	600 µg
Target:	RAB28
Binding Specificity:	C-Term
Reactivity:	Human, Mouse, Rat, Dog, Pig, Donkey, Rabbit, Goat, Guinea Pig, Sheep, Hamster, Cat, Horse, Chicken, Monkey, Cow, Avian
Host:	Goat
Clonality:	Polyclonal
Conjugate:	This RAB28 antibody is un-conjugated
Application:	Western Blotting (WB), Immunofluorescence (IF)

Product Details

Immunogen:	Purified recombinant peptide derived from within residues 120 aa to the C-terminus of mouse Rab28 produced in E. coli.
Isotype:	IgG
Specificity:	Detects Rab28 by Western blot in transfected cells with GFP-Rab28.
Characteristics:	RAB28, member RAS oncogene family
Purification:	epitope affinity purified

Target Details

Target:	RAB28
---------	-------

Target Details

Alternative Name: Rab28 ([RAB28 Products](#))

Background: RAB28 belongs to the large RAB family of low molecular weight GTPases that are involved in intracellular membrane trafficking.

Ensembl identifier: ENSG00000157869

Application Details

Restrictions: For Research Use only

Handling

Concentration: 3 mg/mL

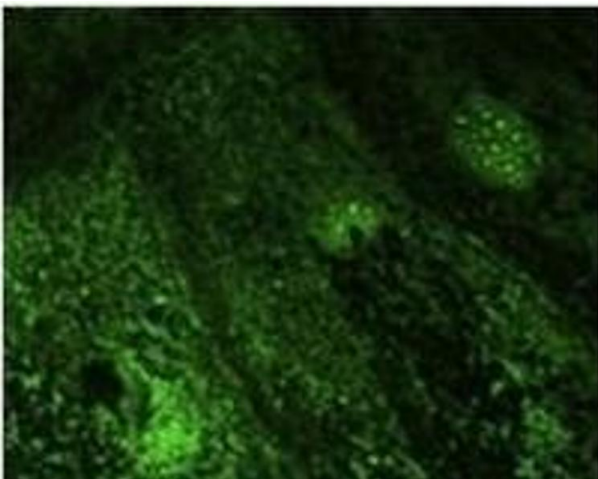
Buffer: Polyclonal antibody supplied as a 200 μ L (3 mg/mL) aliquot in PBS, 20 % glycerol and 0.05 % sodium azide

Handling Advice: The antibody solution should be gently mixed before use.

Storage: 4 $^{\circ}$ C, -20 $^{\circ}$ C

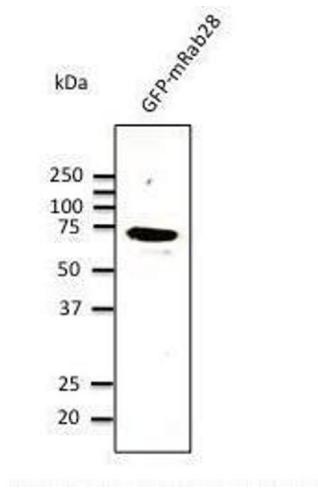
Storage Comment: For continuous use, store at 2-8 deg,C for one-two days. For extended storage, store in -20 deg,C freezer. Working dilution samples should be discarded if not used within 12 hours.

Images



Immunofluorescence

Image 1. Anti-Rab9b Ab at 1/500 dilution, lysates at 100 μ g per lane, rabbit polyclonal to goat IgG (HR?) at 1/10,000 dilution,



Western Blotting

Image 2. Anti-Rab9b Ab at 1/500 dilution, lysates at 100 μ g per lane, rabbit polyclonal to goat 1μ g (HR?) at 1/10,000 dilution,