

Datasheet for ABIN1440022  
**anti-RAB2A antibody (C-Term)**[Go to Product page](#)

## 1 Image

## Overview

Quantity:	400 µg
Target:	RAB2A
Binding Specificity:	C-Term
Reactivity:	Human, Mouse, Rat, Dog, Rabbit, Horse, Cow, Goat, Guinea Pig, Monkey, Pig, Chicken, Cat, Donkey, Hamster, Sheep, Avian
Host:	Goat
Clonality:	Polyclonal
Conjugate:	This RAB2A antibody is un-conjugated
Application:	Western Blotting (WB)

## Product Details

Immunogen:	Purified recombinant peptide derived from within residues 110 aa to the C-terminus of mouse Rab2b produced in E. coli.
Isotype:	IgG
Specificity:	Detects total levels of Rab2 protein in transfected cells with GFP-Rab2a and GFP-Rab2b by Western blot.
Characteristics:	RAB2, member RAS oncogene family
Purification:	epitope affinity purified

## Target Details

Target:	RAB2A
---------	-------

## Target Details

Alternative Name: Rab2 ([RAB2A Products](#))

Background: RAB2 belongs to the large RAB family of low molecular weight GTPases that are involved in intracellular membrane trafficking. It has been demonstrated that Rab2 is essential for the maturation of pre-Golgi intermediates. RAB2A and RAB2B are required for protein transport from the ER to the Golgi, RAB2A is lipid-anchored to the ER-Golgi intermediate compartment membrane while RAB2B is lipid anchored to the cytoplasmic side of the cell membrane. RAB2A has been shown to interact with GOLGA2.

Synonyms: Ras-related protein Rab-2A, Ras-related protein Rab-2B antibody.

Ensembl identifier: ENSG00000104388

Pathways: [SARS-CoV-2 Protein Interactome](#)

## Application Details

Restrictions: For Research Use only

## Handling

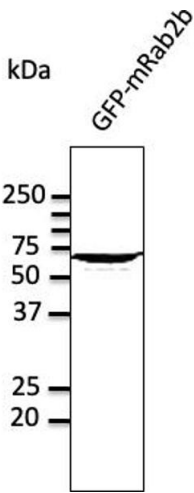
Concentration: 2 mg/mL

Buffer: Polyclonal antibody supplied as a 200 µL (2 mg/mL) aliquot in PBS, 20 % glycerol and 0.05 % sodium azide

Handling Advice: The antibody solution should be gently mixed before use.

Storage: 4 °C, -20 °C

Storage Comment: For continuous use, store at 2-8 deg,C for one-two days. For extended storage, store in -20 deg,C freezer. Working dilution samples should be discarded if not used within 12 hours.



Western Blotting

Image 1.