



[Go to Product page](#)

Datasheet for ABIN1440025
anti-RAB11A antibody (C-Term)

8 Images

Overview

Quantity:	600 µg
Target:	RAB11A
Binding Specificity:	C-Term
Reactivity:	Human, Mouse, Rat, Cow, Horse, Rabbit, Dog, Guinea Pig, Sheep, Monkey, Pig, Hamster, Chicken, Cat, Donkey, Goat, Avian
Host:	Goat
Clonality:	Polyclonal
Conjugate:	This RAB11A antibody is un-conjugated
Application:	Western Blotting (WB)

Product Details

Immunogen:	Purified recombinant peptides derived from within residues 110 aa to the C-terminus of mouse Rab11a, Rab11b and Rab11c (Rab25) produced in E. coli.
Isotype:	IgG
Specificity:	Detects levels of Rab11 by Western blot in the following human, rat and mouse whole cell lysates and transfected cells with GFP-Rab11a, GFP-Rab11b and GFP-Rab11c (Rab25) cds.
Characteristics:	RAB11, member RAS oncogene family
Purification:	epitope affinity purified

Target Details

Target:	RAB11A
---------	--------

Target Details

Alternative Name: Rab11 ([RAB11A Products](#))

Background: Ensembl identifier: ENSG00000103769

Pathways: [Regulation of Cell Size](#), [Thromboxane A2 Receptor Signaling](#), [Regulation of long-term Neuronal Synaptic Plasticity](#)

Application Details

Restrictions: For Research Use only

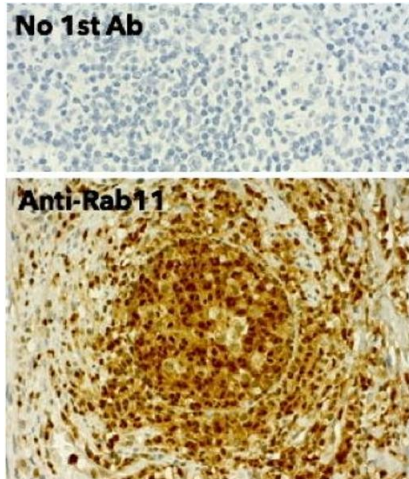
Handling

Handling Advice: The antibody solution should be gently mixed before use.

Storage: 4 °C,-20 °C

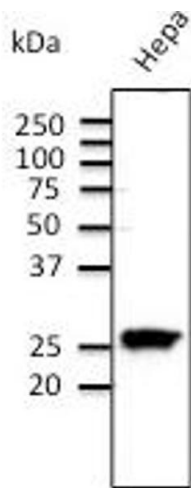
Storage Comment: For continuous use, store at 2-8 deg,C for one-two days. For extended storage, store in -20 deg,C freezer. Working dilution samples should be discarded if not used within 12 hours.

Images



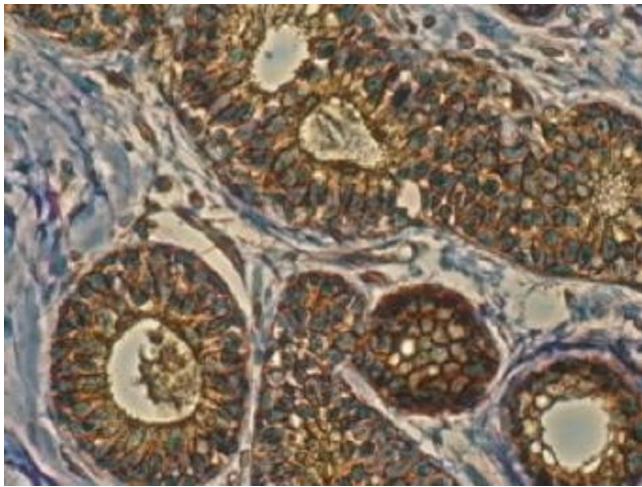
Immunohistochemistry

Image 1.



Western Blotting

Image 2. Anti-Rab11 Ab at 1/500 dilution; Hepa cell line at 100 µg per lane; rabbit polyclonal to goat IgG (HRP) at 1/10.000 dilution;



Immunohistochemistry

Image 3.

Please check the [product details page](#) for more images. Overall 8 images are available for ABIN1440025.