

Datasheet for ABIN1440027  
**anti-RAB11B antibody (C-Term)**[Go to Product page](#)

## 4 Images

## Overview

Quantity:	600 µg
Target:	RAB11B
Binding Specificity:	C-Term
Reactivity:	Human, Mouse, Rat, Dog, Goat, Guinea Pig, Cow, Hamster, Pig, Monkey, Cat, Chicken, Donkey, Horse, Rabbit, Sheep, Avian
Host:	Goat
Clonality:	Polyclonal
Application:	Western Blotting (WB), Immunofluorescence (IF)

## Product Details

Immunogen:	Purified recombinant peptide derived from within residues 120 aa to the C-terminus of mouse Rab11b produced in E. coli.
Isotype:	IgG
Specificity:	Detects a band of 25 kDa by Western blot in the following human, rat and mouse whole cell lysates and transfected cells with GFP-Rab11b cds. This Ab is specific for Rab11b, it does not recognize Rab11a.
Characteristics:	RAB11b, member RAS oncogene family
Purification:	epitope affinity purified

## Target Details

Target:	RAB11B
---------	--------

## Target Details

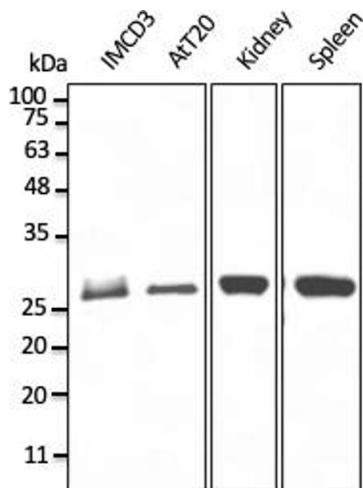
Alternative Name:	Rab11b ( <a href="#">RAB11B Products</a> )
Background:	<p>Goat polyclonal antibody to mouse Rab11a. Rab11a belongs to the small GTPase superfamily, Rab family. The protein is membrane-bound and plays essential roles in vesicle and granule targeting. Similar to Rab11b, it has been shown that Rab11a associates with recycling endosomes.</p> <p>Alternative names: GTP-binding protein YPT3, member of RAS oncogene family, ras-related protein Rab-11B antibody.</p>
Pathways:	<a href="#">Hormone Transport</a> , <a href="#">Carbohydrate Homeostasis</a>

## Application Details

Application Notes:	Western blot 1:250-1:2,000
Restrictions:	For Research Use only

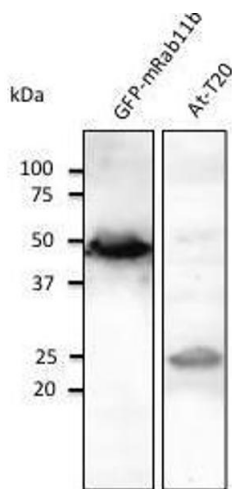
## Handling

Format:	Liquid
Concentration:	1 mg/ml
Buffer:	PBS, 20% glycerol
Preservative:	Sodium azide
Precaution of Use:	This product contains sodium azide: a POISONOUS AND HAZARDOUS SUBSTANCE which should be handled by trained staff only.
Handling Advice:	The antibody solution should be gently mixed before use.
Storage:	4 °C, -20 °C
Storage Comment:	For continuous use, store at 2-8 deg,C for one-two days. For extended storage, store in -20 deg,C freezer. Working dilution samples should be discarded if not used within 12 hours.



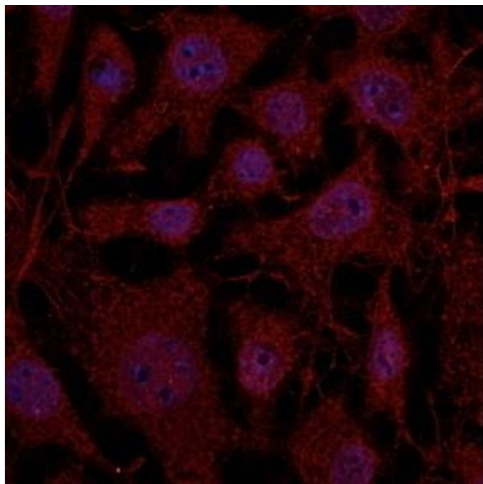
Western Blotting

Image 1.



Western Blotting

**Image 2.** Anti-Rab5 Ab at 1/1,000 dilution, tissue lysate at 100 µg per lane, Rabbit polyclonal to goat IgG (HRP) at 1/10,000 dilution.



Immunofluorescence

Image 3.

Please check the [product details page](#) for more images. Overall 4 images are available for ABIN1440027.