

Datasheet for ABIN1440028
anti-RAB9A antibody (C-Term)[Go to Product page](#)

1 Image

Overview

Quantity:	600 µg
Target:	RAB9A
Binding Specificity:	C-Term
Reactivity:	Human, Rat, Mouse, Guinea Pig, Sheep, Horse, Cow, Dog, Monkey, Rabbit, Chicken, Pig, Cat, Donkey, Goat, Hamster, Avian
Host:	Goat
Clonality:	Polyclonal
Application:	Western Blotting (WB)

Product Details

Immunogen:	Purified recombinant peptide derived from within residues 115 aa to the C-terminus of mouse Rab9a and Rab9b produced in E. coli.
Isotype:	IgG
Specificity:	Rab9 antibody detects endogenous levels of total Rab9 protein and transfected cells with GFP-Rab9a and GFP-Rab9b cds.
Characteristics:	RAB9, member RAS oncogene family
Purification:	epitope affinity purified

Target Details

Target:	RAB9A
Alternative Name:	Rab9 (RAB9A Products)

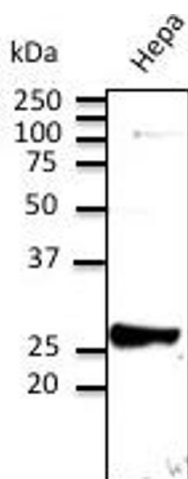
Target Details

Background:	Rab9 belongs to the small GTPase superfamily, Rab family. This protein may be involved in endosome-to-Golgi transport. Synonyms: RAB9, RAB9A, Rab9B, RAB9L, Rab-9L, RAB9-like protein, member RAS oncogene family, ras-related protein Rab-9A, ras-related protein Rab-9B antibody. Ensembl identifier: ENSG00000123595
-------------	---

Application Details

Restrictions:	For Research Use only
Handling	
Concentration:	3 mg/mL
Buffer:	Polyclonal antibody supplied as a 200 µL (3 mg/mL) aliquot in PBS, 20 % glycerol and 0.05 % sodium azide
Handling Advice:	The antibody solution should be gently mixed before use.
Storage:	4 °C, -20 °C
Storage Comment:	For continuous use, store at 2-8 deg,C for one-two days. For extended storage, store in -20 deg,C freezer. Working dilution samples should be discarded if not used within 12 hours.

Images



Western Blotting

Image 1. Anti-Rab9 Ab at 1/500 dilution; Hepa cell line lysates at 100 ug per lane; rabbit polyclonal to goat IgG (HRP) at 1/10,000 dilution;