

Datasheet for ABIN1440030

## anti-Caveolin-1 antibody (N-Term)



[Go to Product page](#)

### 2 Images

#### Overview

Quantity:	400 µg
Target:	Caveolin-1 (CAV1)
Binding Specificity:	N-Term
Reactivity:	Human, Rat, Mouse, Dog, Pig, Cow, Sheep, Rabbit, Monkey, Horse, Guinea Pig, Chicken, Goat, Avian, Cat, Donkey, Hamster
Host:	Goat
Clonality:	Polyclonal
Conjugate:	This Caveolin-1 antibody is un-conjugated
Application:	Western Blotting (WB), Immunofluorescence (IF), Immunohistochemistry (Paraffin-embedded Sections) (IHC (p)), Immunohistochemistry (Frozen Sections) (IHC (fro))

#### Product Details

Immunogen:	Purified recombinant peptide derived from within residues 100 aa to the N-terminus of human CAV1 produced in E. coli.
Isotype:	IgG
Specificity:	Detects a band of approximately 25 kDa by Western blot in the following cell lysate: hCat, MDCK and 3T3.
Characteristics:	Caveolin-1
Purification:	epitope affinity purified

## Target Details

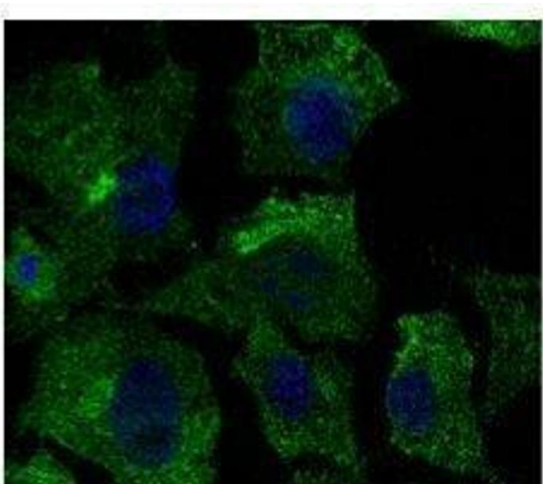
Target:	Caveolin-1 (CAV1)
Alternative Name:	CAV1 ( <a href="#">CAV1 Products</a> )
Background:	<p>This scaffolding protein is the main component of the caveolae plasma membranes found in most cell types. The protein links integrin subunits to the tyrosine kinase FYN, an initiating step in coupling integrins to the Ras-ERK pathway and promoting cell cycle progression.</p> <p>Synonyms: CAV1, caveolin, caveolae protein 1, cell growth-inhibiting protein 32 antibody.</p> <p>Ensembl identifier: ENSG00000105974</p>
Pathways:	<a href="#">Maintenance of Protein Location</a> , <a href="#">Signaling Events mediated by VEGFR1 and VEGFR2</a> , <a href="#">Negative Regulation of Transporter Activity</a> , <a href="#">VEGFR1 Specific Signals</a>

## Application Details

Restrictions:	For Research Use only
---------------	-----------------------

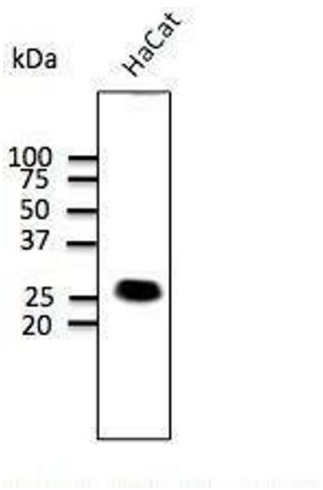
## Handling

Concentration:	2 mg/mL
Buffer:	Polyclonal antibody supplied as a 200 µL (2 mg/mL) aliquot in PBS, 20 % glycerol and 0.05 % sodium azide
Handling Advice:	The antibody solution should be gently mixed before use.
Storage:	4 °C,-20 °C
Storage Comment:	For continuous use, store at 2-8 deg,C for one-two days. For extended storage, store in -20 deg,C freezer. Working dilution samples should be discarded if not used within 12 hours.



Immunofluorescence

**Image 1.** Anti-Calnexin Ab at 1/500 dilution, lysates at 50 per lane, rabbit polyclonal to goat  $\mu\text{g}$  (HRP) at 1/10,000 dilution,



Western Blotting

**Image 2.** Anti-Calnexin Ab at 1/500 dilution, lysates at 50 per lane, rabbit polyclonal to goat  $\mu\text{g}$  (HRP) at 1/10,000 dilution,