

Datasheet for ABIN1440032
anti-N-Cadherin antibody (C-Term)



[Go to Product page](#)

2 Images

Overview

Quantity:	600 µg
Target:	N-Cadherin (CDH2)
Binding Specificity:	C-Term
Reactivity:	Human, Mouse, Rat, Chicken, Cow, Rabbit, Dog, Pig, Monkey, Horse, Sheep, Cat, Donkey, Goat, Guinea Pig, Hamster, Avian
Host:	Goat
Clonality:	Polyclonal
Conjugate:	This N-Cadherin antibody is un-conjugated
Application:	Western Blotting (WB), Immunofluorescence (IF)

Product Details

Immunogen:	Purified recombinant peptide derived from within residues 850 aa to C-terminus of human CDH2 produced in E. coli.
Isotype:	IgG
Specificity:	Detects endogenous levels of total N-cadherin protein by Western blot in the whole cell lysates (COS-7, HeLa, HUH and Hepa-6).
Characteristics:	N-Cadherin
Purification:	epitope affinity purified

Target Details

Target:	N-Cadherin (CDH2)
---------	-------------------

Target Details

Alternative Name: [CDH2 \(CDH2 Products\)](#)

Background: CDH2 is a classical member of the cadherin superfamily. This protein is a calcium dependent cell-cell adhesion glycoprotein comprised consists of 5 cadherin repeats in the extracellular domain, one trans membrane domain, and a highly conserved intracellular domain. It has been shown to play an essential role in normal neuronal development, which is implicated in an array of processes including neuronal differentiation, migration, axon growth and fasciculation.

Synonyms: cadherin 2, cadherin-2, CD325, CDHN, CDw325, CDH2, NCAD, N-cadherin, N-cadherin 1, neural cadherin, neural-cadherin, neural cadherin (NCAD) antibody.

Ensembl identifier: ENSG00000170558

Pathways: [Regulation of Muscle Cell Differentiation](#), [Cell-Cell Junction Organization](#), [Synaptic Membrane](#)

Application Details

Restrictions: For Research Use only

Handling

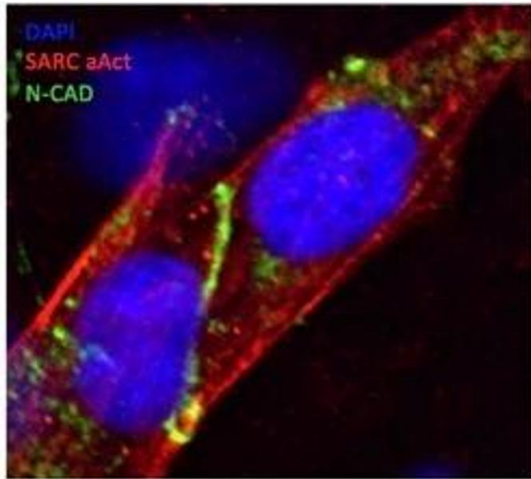
Concentration: 3 mg/mL

Buffer: Polyclonal antibody supplied as a 200 μ L (3 mg/mL) aliquot in PBS, 20 % glycerol and 0.05 % sodium azide

Handling Advice: The antibody solution should be gently mixed before use.

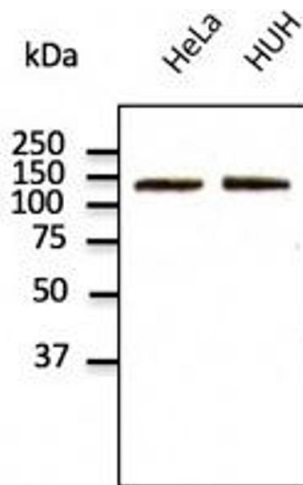
Storage: 4 °C,-20 °C

Storage Comment: For continuous use, store at 2-8 deg,C for one-two days. For extended storage, store in -20 deg,C freezer. Working dilution samples should be discarded if not used within 12 hours.



Immunofluorescence

Image 1. N-Cadherin antibody marking the intercalated disks (distal cell junctions in heart tissue – green line in the middle) of Human iPS-derived cardiomyocytes; Methanol fixation; DAPI: ONA Stain, SARC SarcOmeriC α-ACTinin, N-CAD: N-Cadherin. This Image is courtesy of Dr Zanella F (University of California)



Western Blotting

Image 2. Endogenous CDH2 detected with at 1/500 dilution; lysates at 100 µg per lane and rabbit polyclonal to goat IgG (HRP) at 1/10,000 dilution.