

Datasheet for ABIN1440054  
**anti-RAB20 antibody (C-Term)**[Go to Product page](#)

## 1 Image

## Overview

Quantity:	400 µg
Target:	RAB20
Binding Specificity:	C-Term
Reactivity:	Human, Rat, Mouse, Guinea Pig, Sheep, Rabbit, Pig, Monkey, Horse, Hamster, Goat, Donkey, Dog, Cow, Chicken, Cat, Avian
Host:	Goat
Clonality:	Polyclonal
Conjugate:	This RAB20 antibody is un-conjugated
Application:	Western Blotting (WB)

## Product Details

Immunogen:	Purified recombinant peptide derived from within residues 130 aa to the C-terminus of mouse Rab20 produced in E. coli.
Isotype:	IgG
Specificity:	Detects Rab20 in transfected cells with GFP-Rab20 by Western blot.
Characteristics:	RAB20, member RAS oncogene family
Purification:	epitope affinity purified

## Target Details

Target:	RAB20
---------	-------

## Target Details

Alternative Name: Rab20 ([RAB20 Products](#))

Background: RAB20 belongs to the large RAB family of low molecular weight GTPases that are involved in intracellular membrane trafficking. This protein localizes to Golgi apparatus and plays a role in apical endocytosis/recycling.

Synonyms: Ras-related protein Rab-20 antibody.

Ensembl identifier: ENSG00000139832

## Application Details

Restrictions: For Research Use only

## Handling

Concentration: 2 mg/mL

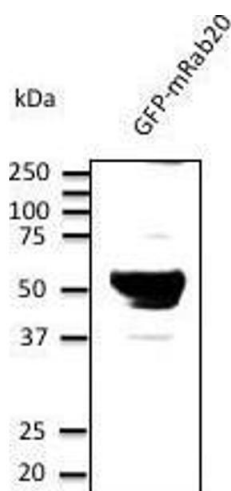
Buffer: Polyclonal antibody supplied as a 200 µL (2 mg/mL) aliquot in PBS, 20 % glycerol and 0.05 % sodium azide

Handling Advice: The antibody solution should be gently mixed before use.

Storage: 4 °C, -20 °C

Storage Comment: For continuous use, store at 2-8 deg,C for one-two days. For extended storage, store in -20 deg,C freezer. Working dilution samples should be discarded if not used within 12 hours.

## Images



### Western Blotting

**Image 1.** Anti-Rab8 Ab at 1/500 dilution, lysates at 50 µg per lane, rabbit polyclonal to goat IgG (HRP) at 1/10,000 dilution,