

Datasheet for ABIN1440055
anti-RAB27B antibody (C-Term)[Go to Product page](#)

2 Images

Overview

Quantity:	600 µg
Target:	RAB27B
Binding Specificity:	C-Term
Reactivity:	Human, Mouse, Rat, Dog, Cow, Guinea Pig, Horse, Rabbit, Monkey, Pig, Sheep, Hamster, Goat, Donkey, Chicken, Cat, Avian
Host:	Goat
Clonality:	Polyclonal
Conjugate:	This RAB27B antibody is un-conjugated
Application:	Western Blotting (WB), Immunohistochemistry (Paraffin-embedded Sections) (IHC (p)), Immunofluorescence (IF), Immunohistochemistry (Frozen Sections) (IHC (fro))

Product Details

Immunogen:	Purified recombinant peptide derived from within residues 120 aa to the C-terminus of mouse Rab27b produced in E. coli.
Isotype:	IgG
Specificity:	Detects Rab27b by Western blot in the following human, rat and mouse whole cell lysates and transfected cells with GFP-Rab27b. This antibody is specific for Rab27b. It does not recognize Rab27a protein.
Characteristics:	RAB27B, member RAS oncogene family
Purification:	epitope affinity purified

Target Details

Target:	RAB27B
Alternative Name:	Rab27b (RAB27B Products)
Background:	<p>Rab27b belongs to the small GTPase superfamily, Rab family. The protein is membrane-bound and involved in vesicle transport and small GTPase mediated signal transduction.</p> <p>Synonyms: C25KG, ras-related protein Rab-27B. .</p> <p>Ensembl identifier: ENSG00000041353</p>

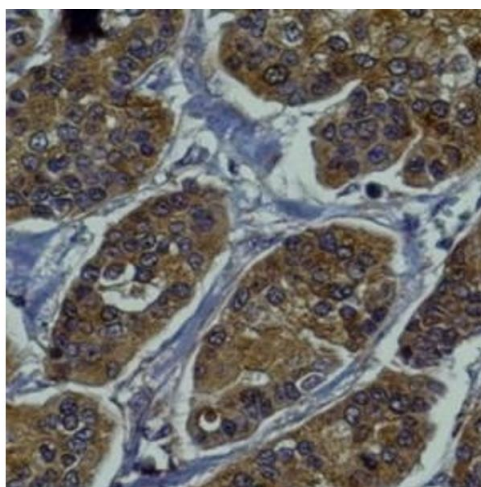
Application Details

Restrictions:	For Research Use only
---------------	-----------------------

Handling

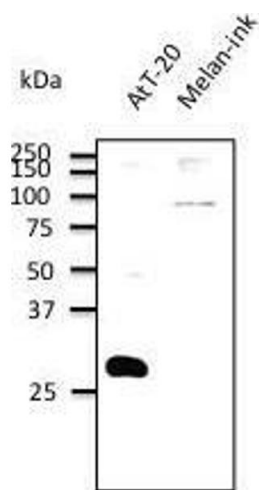
Concentration:	3 mg/mL
Buffer:	Polyclonal antibody supplied as a 200 µL (3 mg/mL) aliquot in PBS, 20 % glycerol and 0.05 % sodium azide
Handling Advice:	The antibody solution should be gently mixed before use.
Storage:	4 °C,-20 °C
Storage Comment:	For continuous use, store at 2-8 deg,C for one-two days. For extended storage, store in -20 deg,C freezer. Working dilution samples should be discarded if not used within 12 hours.

Images



Immunohistochemistry

Image 1.



Western Blotting

Image 2. Anti.Rab27b Ab at 2/500 dilution, lysates at 200 µg per lane, rabbit polyclonal to goat 1µg (HRP) at 2/10,000 dilution,