

Datasheet for ABIN1440056
anti-RAB5 antibody (C-Term)

8 Images

[Go to Product page](#)

Overview

| | |
|----------------------|---|
| Quantity: | 600 µg |
| Target: | RAB5 (RAB5A) |
| Binding Specificity: | C-Term |
| Reactivity: | Human, Mouse, Rat, Cow, Monkey, Dog, Horse, Sheep, Guinea Pig, Rabbit, Pig, Hamster, Chicken, Cat, Donkey, Goat, Avian |
| Host: | Goat |
| Clonality: | Polyclonal |
| Application: | Western Blotting (WB), Immunofluorescence (IF), Immunohistochemistry (Paraffin-embedded Sections) (IHC (p)), Immunohistochemistry (Frozen Sections) (IHC (fro)) |

Product Details

| | |
|------------------|--|
| Immunogen: | Purified recombinant peptide derived from within residues 115 aa to the C-terminus of mouse Rab5a, Rab5b and rab5c produced in E. coli. |
| Isotype: | IgG |
| Specificity: | Detects total Rab5 protein in the following human, rat and mouse whole cell lysates and transfected cells with GFP-Rab5a, GFP-Rab5b and GFP-Rab5c cds by Western blot. |
| Characteristics: | RAB5A, member RAS oncogene family |
| Purification: | epitope affinity purified |

Target Details

| | |
|---------|--------------|
| Target: | RAB5 (RAB5A) |
|---------|--------------|

Target Details

| | |
|-------------------|--|
| Alternative Name: | Rab5 (RAB5A Products) |
| Background: | <p>Rab5 belongs to the small GTPase superfamily, Rab family. Rab5a is an Early Endosome Marker and functions as a key regulator of vesicular trafficking during early endocytosis.</p> <p>Synonyms: RAB5A, RAB5B, RAB5C, RAS-associated protein RAB5A, ras-related protein Rab-5B, RAS-associated protein RAB5C, ras-related protein Rab-5A, ras-related protein Rab-5B, ras-related protein Rab-5C antibody. .</p> <p>Ensembl identifier: ENSG00000144566</p> |
| Pathways: | Smooth Muscle Cell Migration , Regulation of long-term Neuronal Synaptic Plasticity |

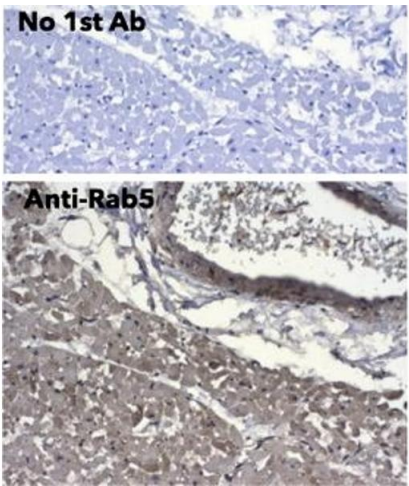
Application Details

| | |
|---------------|-----------------------|
| Restrictions: | For Research Use only |
|---------------|-----------------------|

Handling

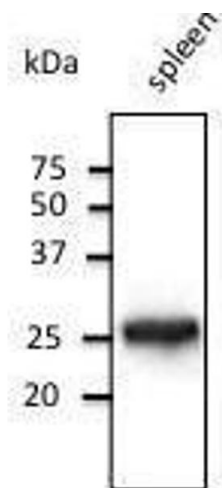
| | |
|------------------|--|
| Concentration: | 3 mg/mL |
| Buffer: | Polyclonal antibody supplied as a 200 µL (3 mg/mL) aliquot in PBS, 20 % glycerol and 0.05 % sodium azide |
| Handling Advice: | The antibody solution should be gently mixed before use. |
| Storage: | 4 °C, -20 °C |
| Storage Comment: | For continuous use, store at 2-8 deg,C for one-two days. For extended storage, store in -20 deg,C freezer. Working dilution samples should be discarded if not used within 12 hours. |

Images



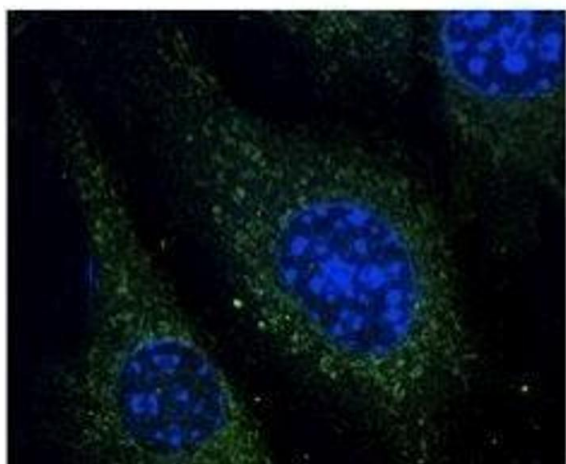
Immunohistochemistry

Image 1.



Western Blotting

Image 2. Anti-Rab14 Ab at 1/500 dilution, lysates at 50 µg per lane, rabbit polyclonal to goat 1µg (HR?) at 1/10.000 dilution:



Immunofluorescence

Image 3. Anti-Rab14 Ab at 1/500 dilution, lysates at 50 µg per lane, rabbit polyclonal to goat 1µg (HR?) at 1/10.000 dilution:

Please check the [product details page](#) for more images. Overall 8 images are available for ABIN1440056.