

Datasheet for ABIN1449186

anti-ABI1 antibody

3 Images

[Go to Product page](#)

Overview

Quantity:	0.1 mg
Target:	ABI1
Reactivity:	Human, Mouse, Hamster
Host:	Mouse
Clonality:	Monoclonal
Conjugate:	This ABI1 antibody is un-conjugated
Application:	Western Blotting (WB), Immunoprecipitation (IP), Immunohistochemistry (Paraffin-embedded Sections) (IHC (p))

Product Details

Immunogen:	Human recombinant Abi-1 expressed in E. coli
Clone:	1B9
Isotype:	IgG1
Specificity:	This antibody reacts with Abi-1.
Cross-Reactivity (Details):	Species reactivity (tested): Human, Mouse, Hamster
Purification:	Protein A agarose

Target Details

Target:	ABI1
Alternative Name:	ABI1 / SSH3BP1 (ABI1 Products)

Target Details

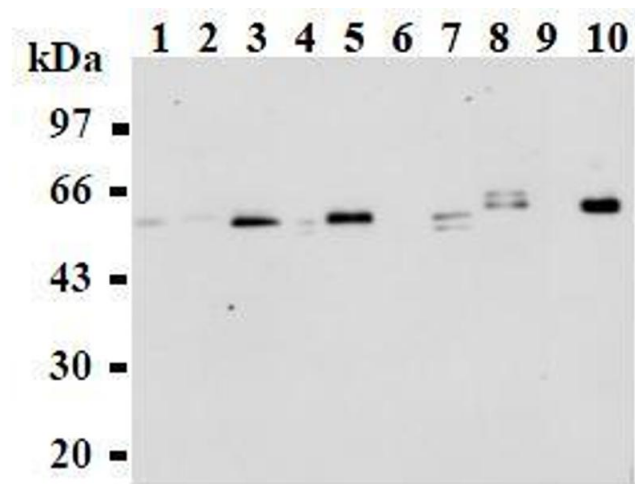
Background:	Abl interactor (Abi) proteins are c-Abl-binding proteins that bind to both the Src homology 3 (SH3) domain and the C-terminal proline-rich regions of Abl kinase through dual SH3-PXXP interactions. Two highly related genes, abi-1 and abi-2, were cloned. In addition to the interaction with Abl kinase, Abi proteins also interact with other signaling molecules. Recently, it has been reported that Abi-1 dramatically promoted c-Abl-mediated tyrosine (Tyr296) phosphorylation of Mena [mammalian homologue of Drosophila Enabled (Ena)] by interacting with both proteins. Synonyms: Abelson interactor 1, Abi-1, Abl interactor 1, Abl-binding protein 4, AbIBP4, Eps8 SH3 domain-binding protein, Nap1-binding protein, Spectrin SH3 domain-binding protein 1, Spectrin binding protein, e3B1
Molecular Weight:	65 kDa
Gene ID:	10006
NCBI Accession:	NP_001012768
UniProt:	Q8IZP0
Pathways:	RTK Signaling , Response to Water Deprivation , ER-Nucleus Signaling

Application Details

Application Notes:	Optimal working dilution should be determined by the investigator.
Restrictions:	For Research Use only

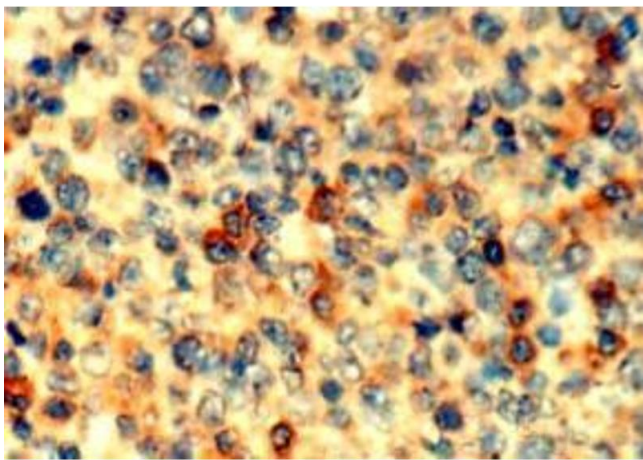
Handling

Concentration:	1.0 mg/mL
Buffer:	PBS containing 50 % glycerol, pH 7.2. No preservative is contained.
Preservative:	Without preservative
Handling Advice:	Avoid repeated freezing and thawing.
Storage:	-20 °C
Storage Comment:	Upon receipt, store (in aliquots) at -20 °C.



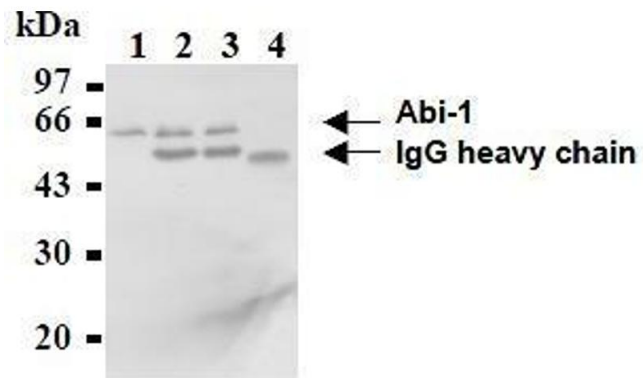
Western Blotting

Image 1.



Immunohistochemistry

Image 2.



Western Blotting

Image 3.