

Datasheet for ABIN1449239

anti-NUMA1 antibody

3 Images



[Go to Product page](#)

Overview

Quantity:	0.1 mg
Target:	NUMA1
Reactivity:	Human
Host:	Mouse
Clonality:	Monoclonal
Conjugate:	This NUMA1 antibody is un-conjugated
Application:	Western Blotting (WB), Immunofluorescence (IF), Immunoprecipitation (IP)

Product Details

Immunogen:	Protein fraction extracted from the mitotic chromosome
Clone:	C02142
Isotype:	IgG1
Specificity:	This antibody reacts with human NuMA.
Purification:	Protein A agarose

Target Details

Target:	NUMA1
Alternative Name:	NuMA (NUMA1 Products)
Background:	NuMA (Nuclear Mitotic Apparatus Protein) is involved in maintenance of nuclear structure and in the assembly of the mitotic spindle. During interphase, NuMA is present throughout the

Target Details

nucleus, and during mitosis, it localizes to the spindle. It associates with microtubule motors during mitosis, and plays an essential role in anchoring microtubule ends to the spindle poles. NuMA is an autoantigen, and some individuals with connective tissue disease or other autoimmune disorders have antibodies directed against the NuMA protein. Recent data suggests NuMA (240 kDa) is cleaved to a 180-200 kDa form during apoptosis. Synonyms: NUMA1, Nuclear mitotic apparatus protein 1, SP-H antigen

Molecular Weight: 240 kDa

Gene ID: 4926

NCBI Accession: [NP_006176](#)

UniProt: [Q14980](#)

Pathways: [Caspase Cascade in Apoptosis](#), [Regulation of Actin Filament Polymerization](#), [M Phase](#)

Application Details

Application Notes: Optimal working dilution should be determined by the investigator.

Restrictions: For Research Use only

Handling

Concentration: 1.0 mg/mL

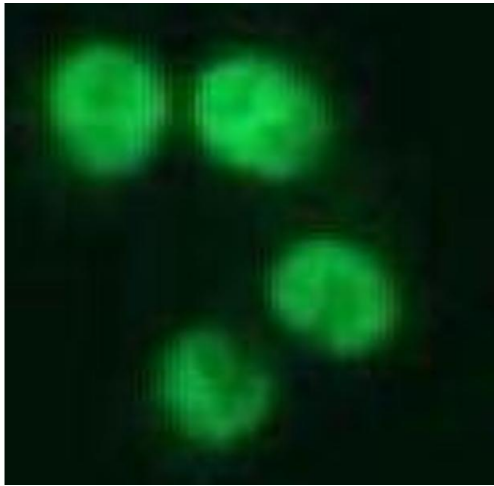
Buffer: PBS containing 50 % glycerol, pH 7.2. No preservative is contained.

Preservative: Without preservative

Handling Advice: Avoid repeated freezing and thawing.

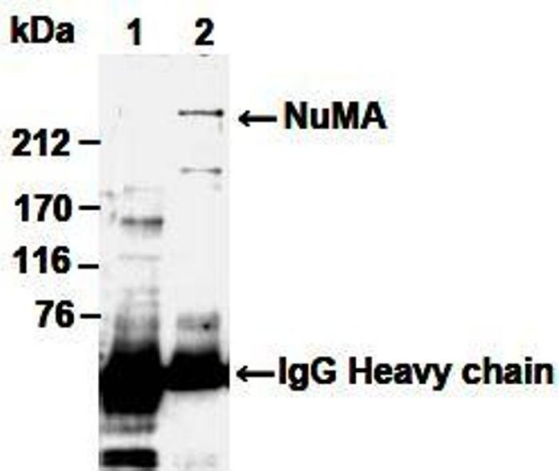
Storage: -20 °C

Storage Comment: Upon receipt, store (in aliquots) at -20 °C.



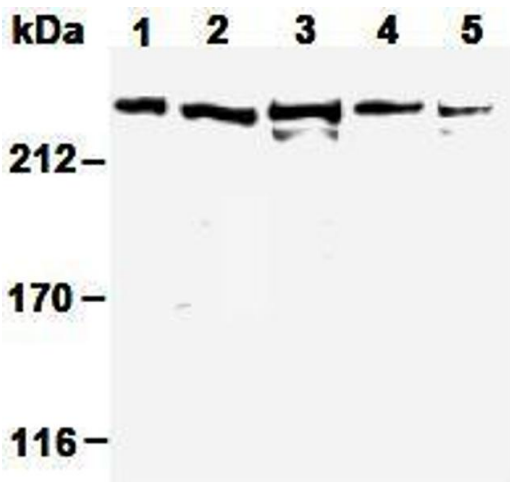
Immunofluorescence

Image 1.



Western Blotting

Image 2.



Western Blotting

Image 3.