

Datasheet for ABIN1449240
anti-HNRNPA2B1 antibody



[Go to Product page](#)

2 Images

Overview

Quantity:	0.1 mg
Target:	HNRNPA2B1
Reactivity:	Human, Mouse
Host:	Mouse
Clonality:	Monoclonal
Conjugate:	This HNRNPA2B1 antibody is un-conjugated
Application:	Western Blotting (WB), Immunofluorescence (IF)

Product Details

Immunogen:	Protein fraction extracted from the mitotic chromosome
Clone:	C20308
Isotype:	IgM
Specificity:	This antibody reacts with hnRNP-A2/B1.
Cross-Reactivity (Details):	Species reactivity (tested): Human, Mouse

Target Details

Target:	HNRNPA2B1
Alternative Name:	HnRNP-A2/B1 / HNRNPA2B1 (HNRNPA2B1 Products)
Background:	The heterogeneous nuclear ribonucleoprotein-A2/B1 (hnRNP-A2/B1) was recently shown to be up-regulated in the early stage of lung cancer. This protein plays an important role in

Target Details

biogenesis and transport of mRNA. Up-regulation of hnRNP usually precedes morphological differentiation and is considered a good biomarker in the early stages of cancer development. HnRNP-A2/B1 proteins were localized primarily in the nucleus, excluding the nucleolus, although the expression of A2 protein was weaker than that of B1 protein. hnRNP-A2/B1 proteins were apparently expressed in nonmalignant alveolar cells as well as cancer cells, although the expression in alveolar cells was weaker than that of cancer cells.Synonyms: HNRPA2B1, Heterogeneous nuclear ribonucleoproteins A2/B1, hnRNP A2 / hnRNP B1

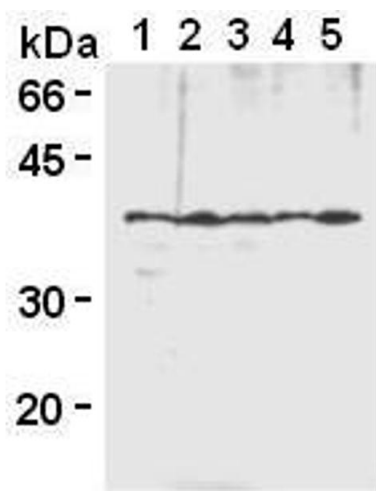
Molecular Weight:	40 kDa
Gene ID:	3181
NCBI Accession:	NP_002128
UniProt:	P22626

Application Details

Application Notes:	Optimal working dilution should be determined by the investigator.
Restrictions:	For Research Use only

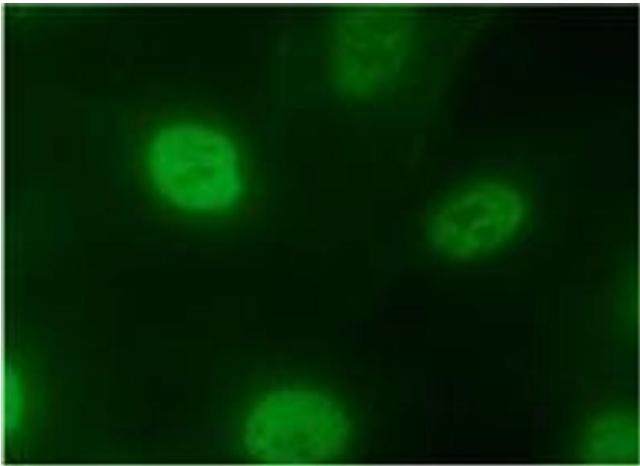
Handling

Concentration:	1.0 mg/mL
Buffer:	PBS containing 50 % glycerol, pH 7.2. No preservative is contained.
Preservative:	Without preservative
Handling Advice:	Avoid repeated freezing and thawing.
Storage:	-20 °C
Storage Comment:	Upon receipt, store (in aliquots) at -20 °C.



Western Blotting

Image 1.



Immunofluorescence

Image 2.