

Datasheet for ABIN1449286

anti-GFRA1 antibody (Extracellular Domain)



[Go to Product page](#)

2 Images

Overview

Quantity:	0.1 mg
Target:	GFRA1
Binding Specificity:	AA 24-440, Extracellular Domain
Reactivity:	Human
Host:	Mouse
Clonality:	Monoclonal
Conjugate:	This GFRA1 antibody is un-conjugated
Application:	Flow Cytometry (FACS), Immunoprecipitation (IP)

Product Details

Immunogen:	Recombinant human GFRalpha1 extracellular domain (24-440 aa)
Clone:	3H8
Isotype:	IgG2b
Specificity:	This antibody detects GFRα1. reacts with HCC-1500, MCF-7, but NOT with BT-20, ZR-75-1.
Cross-Reactivity (Details):	Species reactivity (tested):Human
Purification:	Protein A agarose

Target Details

Target:	GFRA1
Alternative Name:	GFRA1 / GDNFR-alpha (GFRA1 Products)

Target Details

Background:	Glial cell line-derived neurotrophic factor (GDNF) family plays a critical role in neurodevelopment and survival of central and peripheral neurons. The biological activity of GDNF family through receptor protein tyrosine kinase Ret and require a ligand specific co-receptor a (GFRa1, binds GDNF, whereas GFRa2 binds NRTN, GFRa3 binds ARTN and GFRa4 binds PSPN). Human GFRa1 is constituted from 465 amino acids and attach to the cell membrane by glycosylphosphatidylinositol (GPI) anchoring manner. It is widely accepted that homodimeric GDNF induce the complex formation of GFRa1 and further the stoichiometry of the signaling complex with GDNF2-GFRa12-Ret2, but the mechanism of complex formation remain unclear.Synonyms: GDNF family receptor alpha-1, GDNF receptor alpha, GDNFRA, GFR-alpha-1, RET ligand 1, RETL1, TGF-beta-related neurotrophic factor receptor 1, TRNR1
Gene ID:	2674
NCBI Accession:	NP_001138925
UniProt:	P56159

Application Details

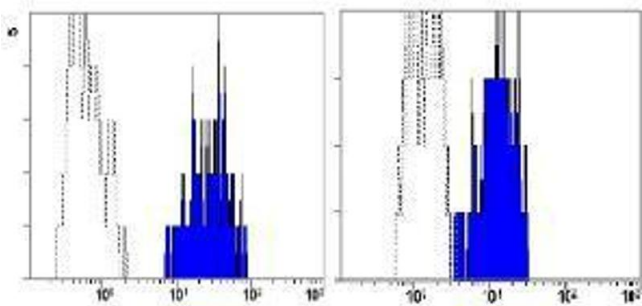
Application Notes:	Optimal working dilution should be determined by the investigator.
Restrictions:	For Research Use only

Handling

Concentration:	1.0 mg/mL
Buffer:	PBS containing 50 % glycerol, pH 7.2. No preservative is contained.
Preservative:	Without preservative
Handling Advice:	Avoid repeated freezing and thawing.
Storage:	-20 °C
Storage Comment:	Upon receipt, store (in aliquots) at -20 °C.

Flow Cytometry

Image 1.



Western Blotting

Image 2.

