

Datasheet for ABIN1449288
anti-KIF11 antibody (N-Term)



[Go to Product page](#)

2 Images

Overview

Quantity:	0.1 mg
Target:	KIF11
Binding Specificity:	AA 1-1056, N-Term
Reactivity:	Human
Host:	Mouse
Clonality:	Monoclonal
Conjugate:	This KIF11 antibody is un-conjugated
Application:	Western Blotting (WB), Immunoprecipitation (IP)

Product Details

Immunogen:	Recombinant full-length human KIF11 (1-1056 aa)
Clone:	3A1
Isotype:	IgG2a
Specificity:	This antibody reacts with KIF11.
Cross-Reactivity (Details):	Species reactivity (tested):Human
Purification:	Protein A agarose

Target Details

Target:	KIF11
Alternative Name:	KIF11 (KIF11 Products)

Target Details

Background: KIF11(Eg5), a member of kinesin superfamily, is a tetrameric motor protein that is phosphorylated specifically during mitosis by cdc2/cyclin B kinase at Thr927. It is essential to forming bipolar spindles needed to divide sister chromatids, inhibition of KIF11 arrests HeLa cells at mitosis with monoaster state. Synonyms: EG5, KIF11, KNSL1, Kinesin-like protein 1, Kinesin-like protein KIF11, Kinesin-like spindle protein HKSP, Kinesin-related motor protein Eg5, TRIP-5, TRIP5, Thyroid receptor-interacting protein 5

Gene ID: 3832

NCBI Accession: [NP_004514](#)

UniProt: [P52732](#)

Application Details

Application Notes: Optimal working dilution should be determined by the investigator.

Restrictions: For Research Use only

Handling

Concentration: 1.0 mg/mL

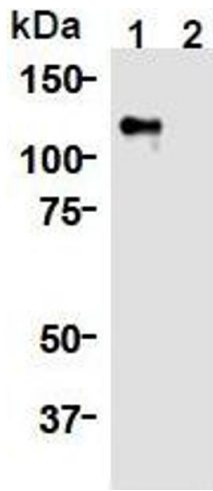
Buffer: PBS containing 50 % glycerol, pH 7.2. No preservative is contained.

Preservative: Without preservative

Handling Advice: Avoid repeated freezing and thawing.

Storage: -20 °C

Storage Comment: Upon receipt, store (in aliquots) at -20 °C.



Western Blotting

Image 1.



Western Blotting

Image 2.