

Datasheet for ABIN1449610
anti-ATG12 antibody (N-Term)



[Go to Product page](#)

3 Images

Overview

Quantity:	0.4 mL
Target:	ATG12
Binding Specificity:	AA 44-73, N-Term
Reactivity:	Human
Host:	Rabbit
Clonality:	Polyclonal
Conjugate:	This ATG12 antibody is un-conjugated
Application:	Western Blotting (WB), Immunohistochemistry (Paraffin-embedded Sections) (IHC (p)), Enzyme Immunoassay (EIA)

Product Details

Immunogen:	KLH conjugated synthetic peptide between 44~73 amino acids from the N-term of Human APG12L Genename: ATG12
Isotype:	Ig Fraction
Specificity:	This antibody recognizes Human APG12L (N-term). Other species not tested.
Purification:	Saturated Ammonium Sulfate precipitation followed by dialysis against PBS

Target Details

Target:	ATG12
Alternative Name:	ATG12 / APG12 (ATG12 Products)

Target Details

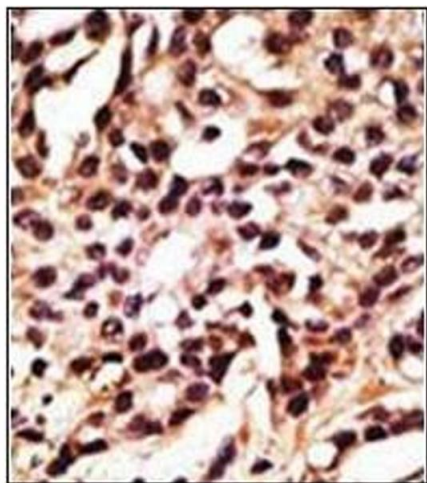
Background:	Macroautophagy is the major inducible pathway for the general turnover of cytoplasmic constituents in eukaryotic cells, it is also responsible for the degradation of active cytoplasmic enzymes and organelles during nutrient starvation. Macroautophagy involves the formation of double-membrane bound autophagosomes which enclose the cytoplasmic constituent targeted for degradation in a membrane bound structure, which then fuse with the lysosome (or vacuole) releasing a single-membrane bound autophagic bodies which are then degraded within the lysosome (or vacuole). APG12L is the human homolog of yeast APG12, a ubiquitin-activating enzyme E1-like protein essential for the conjugation system that mediates membrane fusion in autophagy.Synonyms: APG12-like, APG12L, Autophagy-related protein 12, Ubiquitin-like protein ATG12
Molecular Weight:	15113 Da
Gene ID:	9140
NCBI Accession:	NP_004698
Pathways:	Autophagy

Application Details

Application Notes:	Optimal working dilution should be determined by the investigator.
Restrictions:	For Research Use only

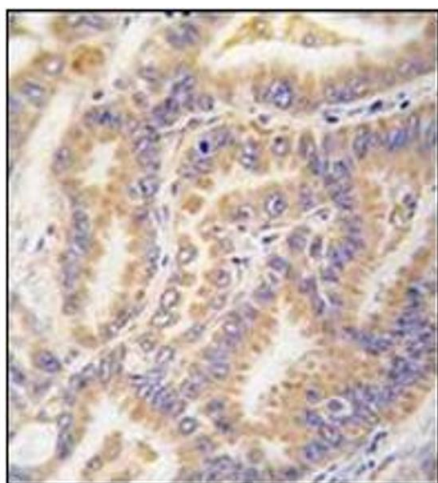
Handling

Format:	Liquid
Concentration:	0.25 mg/mL
Buffer:	PBS containing 0.09 % (W/V) Sodium Azide as preservative
Preservative:	Sodium azide
Precaution of Use:	This product contains sodium azide: a POISONOUS AND HAZARDOUS SUBSTANCE which should be handled by trained staff only.
Handling Advice:	Avoid repeated freezing and thawing.
Storage:	4 °C/-20 °C
Storage Comment:	Store undiluted at 2-8 °C for one month or (in aliquots) at -20 °C for longer.



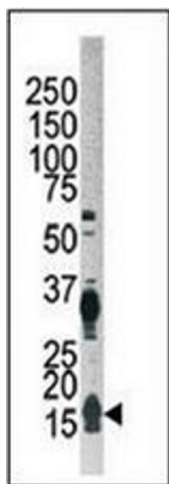
Immunohistochemistry (Paraffin-embedded Sections)

Image 1. Formalin-fixed and paraffin-embedded human cancer tissue reacted with Autophagy APG12L Antibody (N-term), which was peroxidase-conjugated to the secondary antibody, followed by DAB staining.



Immunohistochemistry (Paraffin-embedded Sections)

Image 2. Formalin-fixed and paraffin-embedded human lung carcinoma tissue reacted with Autophagy APG12L Antibody (N-term), which was peroxidase-conjugated to the secondary antibody, followed by DAB staining.



Western Blotting

Image 3. Western blot analysis of APG12L Antibody in Hela cell lysate. APG12L (arrow) was detected using the purified Pab.