

Datasheet for ABIN1449615
anti-LAMP1 antibody (N-Term)



[Go to Product page](#)

3 Images

Overview

Quantity:	0.4 mL
Target:	LAMP1
Binding Specificity:	AA 131-161, N-Term
Reactivity:	Human, Mouse
Host:	Rabbit
Clonality:	Polyclonal
Conjugate:	This LAMP1 antibody is un-conjugated
Application:	Western Blotting (WB), Immunohistochemistry (Paraffin-embedded Sections) (IHC (p)), Enzyme Immunoassay (EIA)

Product Details

Immunogen:	KLH conjugated synthetic peptide between 131~161 amino acids from the N-terminal region of Human LAMP1
Isotype:	Ig Fraction
Purification:	Protein A column, followed by peptide affinity purification. The antibody is eluted with high and low pH buffers and neutralized immediately, followed by dialysis against PBS

Target Details

Target:	LAMP1
Alternative Name:	CD107a / LAMP1 (LAMP1 Products)
Background:	LAMP1 is a member of a family of membrane glycoproteins. This glycoprotein provides

Target Details

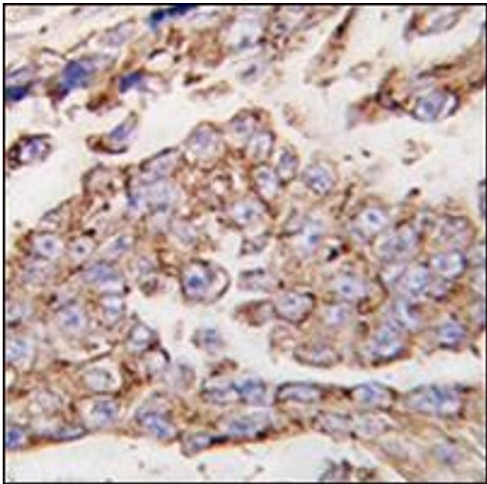
	selectins with carbohydrate ligands. It may also play a role in tumor cell metastasis.Synonyms: CD107 Antigen-like Family Member A, LAMP-1, LAMPA, LGP120, Lysosome-associated membrane glycoprotein 1
Gene ID:	3916
NCBI Accession:	NP_005552
Pathways:	Autophagy

Application Details

Application Notes:	Optimal working dilution should be determined by the investigator.
Restrictions:	For Research Use only

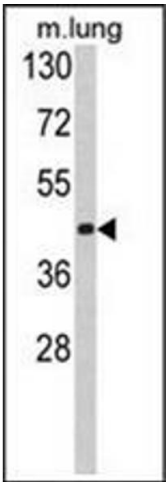
Handling

Format:	Liquid
Concentration:	0.25 mg/mL
Buffer:	PBS containing 0.09 % (W/V) Sodium Azide as preservative
Preservative:	Sodium azide
Precaution of Use:	This product contains sodium azide: a POISONOUS AND HAZARDOUS SUBSTANCE which should be handled by trained staff only.
Handling Advice:	Avoid repeated freezing and thawing.
Storage:	4 °C/-20 °C
Storage Comment:	Store undiluted at 2-8 °C for one month or (in aliquots) at -20 °C for longer.



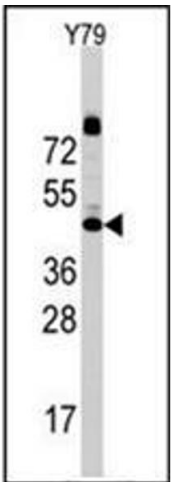
Immunohistochemistry (Paraffin-embedded Sections)

Image 1. Formalin-fixed and paraffin-embedded human lung carcinoma tissue reacted with CD107a / LAMP1 Antibody (N-term) followed which was peroxidase-conjugated to the secondary antibody, followed by DAB staining.



Western Blotting

Image 2. Western blot analysis of CD107a / LAMP1 Antibody (N-term) in mouse lung tissue lysates (35ug/lane). LAMP1 (arrow) was detected using the purified Pab



Western Blotting

Image 3. Western blot analysis of CD107a / LAMP1 Antibody (N-term) Cat.-No AP32183PU-N in Y79 cell line lysates (35ug/lane). LAMP1 (arrow) was detected using the purified Pab (1:60 dilution).