

Datasheet for ABIN1449643
anti-SLC16A12 antibody[Go to Product page](#)

2 Images

Overview

Quantity:	50 µg
Target:	SLC16A12
Reactivity:	Human, Mouse
Host:	Rabbit
Clonality:	Polyclonal
Conjugate:	This SLC16A12 antibody is un-conjugated
Application:	Immunohistochemistry (Paraffin-embedded Sections) (IHC (p)), Enzyme Immunoassay (EIA)

Product Details

Immunogen:	Synthetic peptide derived from Internal Human MOT12.
Isotype:	IgG
Cross-Reactivity (Details):	Species reactivity (tested): Human, Mouse.
Purification:	Immunoaffinity Chromatography

Target Details

Target:	SLC16A12
Alternative Name:	SLC16A12 (SLC16A12 Products)
Background:	Synonyms: MCT 12, MCT12, Monocarboxylate transporter 12, Solute carrier family 16 member 12
Gene ID:	387700

Target Details

NCBI Accession: [NP_998771](#)

Application Details

Application Notes: Optimal working dilution should be determined by the investigator.

Restrictions: For Research Use only

Handling

Concentration: 1.0 mg/mL

Buffer: PBS (without Mg²⁺, Ca²⁺), pH 7.4 containing 150 mM Sodium Chloride, 50 % Glycerol and 0.02 % Sodium Azide as preservative

Preservative: Sodium azide

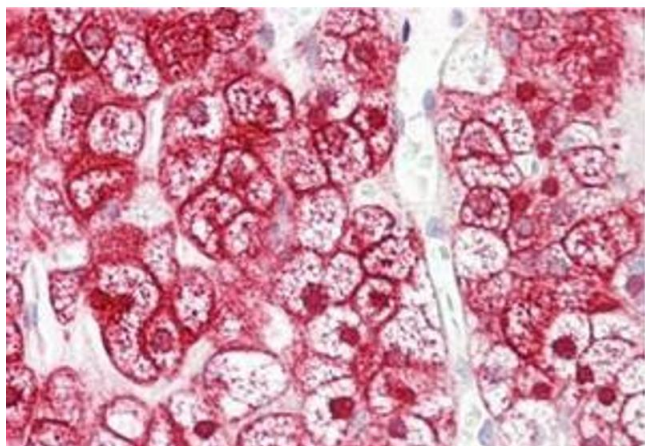
Precaution of Use: This product contains sodium azide: a POISONOUS AND HAZARDOUS SUBSTANCE which should be handled by trained staff only.

Handling Advice: Avoid repeated freezing and thawing.

Storage: 4 °C/-20 °C

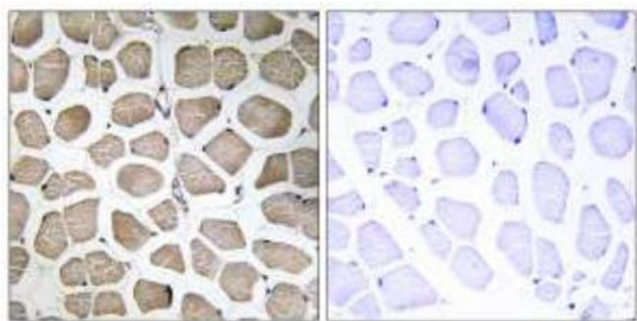
Storage Comment: Store undiluted at 2-8 °C for one month or (in aliquots) at -20 °C for longer.

Images



Immunohistochemistry (Paraffin-embedded Sections)

Image 1. Human Adrenal: Formalin-Fixed, Paraffin-Embedded (FFPE)



Immunohistochemistry (Paraffin-embedded Sections)

Image 2. Immunohistochemistry analysis of paraffin-embedded human skeletal muscle tissue using MOT12 Antibody . The picture on the right is treated with the synthesized peptide.