



[Go to Product page](#)

Datasheet for ABIN1449644

## anti-Endothelin-1 Receptor antibody (C-Term)

### 3 Images

#### Overview

Quantity:	50 µg
Target:	Endothelin-1 Receptor (EDNRA)
Binding Specificity:	C-Term
Reactivity:	Human, Mouse
Host:	Rabbit
Clonality:	Polyclonal
Conjugate:	This Endothelin-1 Receptor antibody is un-conjugated
Application:	Western Blotting (WB), Immunofluorescence (IF), Immunohistochemistry (Paraffin-embedded Sections) (IHC (p)), Enzyme Immunoassay (EIA)

#### Product Details

Immunogen:	Synthetic peptide derived from C-term of Human EDNRA.
Isotype:	IgG
Cross-Reactivity (Details):	Species reactivity (tested):Human, Mouse.
Purification:	Immunoaffinity Chromatography

#### Target Details

Target:	Endothelin-1 Receptor (EDNRA)
Alternative Name:	Endothelin A Receptor ( <a href="#">EDNRA Products</a> )
Background:	Synonyms: EDNRA, ET-A, ETA, ETA-R, ETRA, Endothelin-1 receptor, endothelin receptor type A,

## Target Details

	hET-AR
Gene ID:	1909
NCBI Accession:	<a href="#">NP_001159527</a>
Pathways:	<a href="#">cAMP Metabolic Process</a>

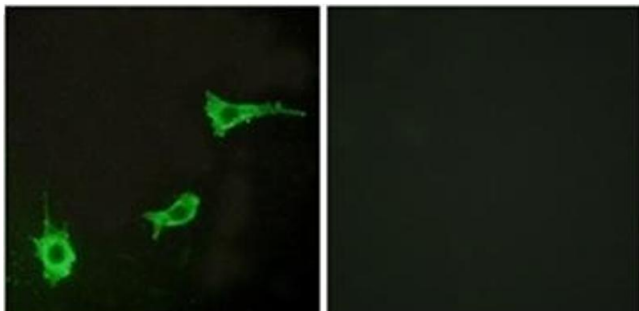
## Application Details

Application Notes:	Optimal working dilution should be determined by the investigator.
Restrictions:	For Research Use only

## Handling

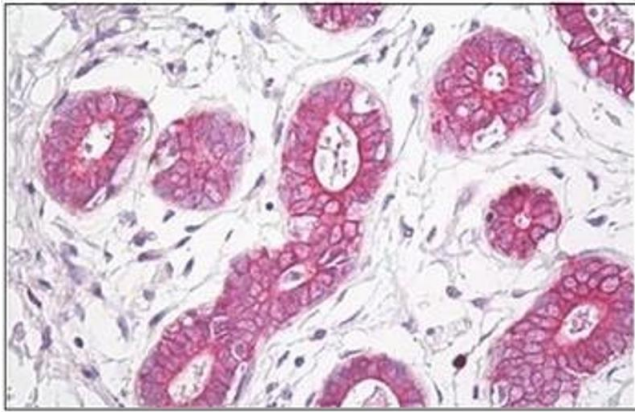
Concentration:	1.0 mg/mL
Buffer:	PBS (without Mg <sup>2+</sup> , Ca <sup>2+</sup> ), pH 7.4 containing 150 mM Sodium Chloride, 50 % Glycerol and 0.02 % Sodium Azide as preservative
Preservative:	Sodium azide
Precaution of Use:	This product contains sodium azide: a POISONOUS AND HAZARDOUS SUBSTANCE which should be handled by trained staff only.
Handling Advice:	Avoid repeated freezing and thawing.
Storage:	4 °C/-20 °C
Storage Comment:	Store undiluted at 2-8 °C for one month or (in aliquots) at -20 °C for longer.

## Images



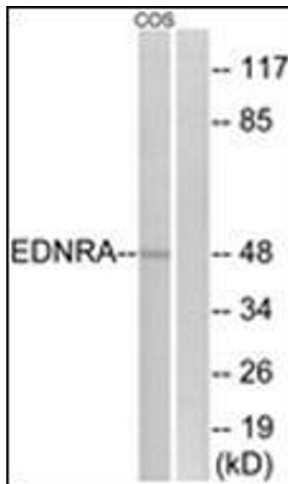
### Immunofluorescence

**Image 1.** Immunofluorescence analysis of LOVO cells, using EDNRA Antibody . The picture on the right is treated with the synthesized peptide.



### Immunohistochemistry (Paraffin-embedded Sections)

**Image 2.** Human Breast: Formalin-Fixed, Paraffin-Embedded (FFPE)



### Western Blotting

**Image 3.** Western blot analysis of extracts from COS7 cells, using EDNRA Antibody . The lane on the right is treated with the synthesized peptide.