



[Go to Product page](#)

Datasheet for ABIN1449695

anti-TSC22D1 antibody (N-Term)

3 Images

Overview

Quantity:	50 µg
Target:	TSC22D1
Binding Specificity:	N-Term
Reactivity:	Human, Rat, Mouse
Host:	Rabbit
Clonality:	Polyclonal
Conjugate:	This TSC22D1 antibody is un-conjugated
Application:	Western Blotting (WB), Immunofluorescence (IF), Immunohistochemistry (Paraffin-embedded Sections) (IHC (p)), Enzyme Immunoassay (EIA)

Product Details

Immunogen:	Synthetic peptide derived from N-terminal region of Human TSC22
Isotype:	IgG
Cross-Reactivity (Details):	Species reactivity (tested):Human, Mouse, Rat.
Purification:	Immunoaffinity Chromatography

Target Details

Target:	TSC22D1
Alternative Name:	TSC22D1 (TSC22D1 Products)
Background:	Synonyms: Cerebral protein 2, KIAA1994, Regulatory protein TSC-22, TGFB-stimulated clone 22

Target Details

homolog, TGFB114, TSC22, TSC22 domain family protein 1, Transforming growth factor beta-1-induced transcript 4 protein

Gene ID: 8848

NCBI Accession: [NP_006013](#)

Application Details

Application Notes: Optimal working dilution should be determined by the investigator.

Restrictions: For Research Use only

Handling

Concentration: 1.0 mg/mL

Buffer: PBS (without Mg²⁺, Ca²⁺), pH 7.4, 150 mM Sodium Chloride, 50 % Glycerol, 0.02 % Sodium Azide

Preservative: Sodium azide

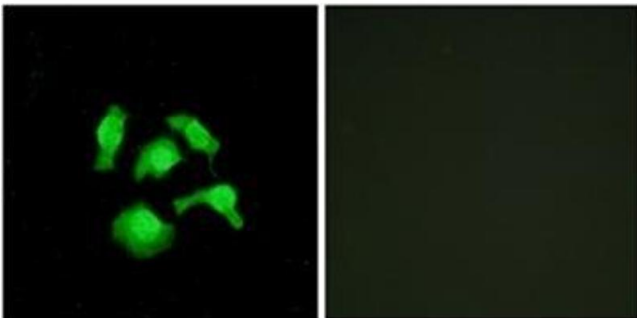
Precaution of Use: This product contains sodium azide: a POISONOUS AND HAZARDOUS SUBSTANCE which should be handled by trained staff only.

Handling Advice: Avoid repeated freezing and thawing.

Storage: 4 °C/-20 °C

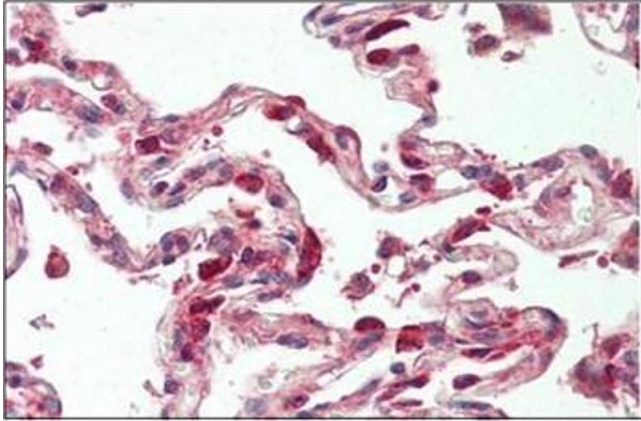
Storage Comment: Store undiluted at 2-8 °C for one month or (in aliquots) at -20 °C for longer.

Images



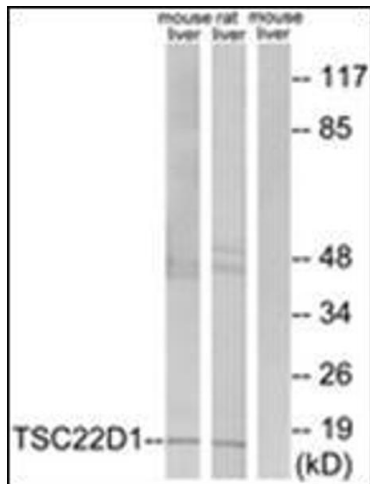
Immunofluorescence

Image 1. Immunofluorescence analysis of HepG2 cells, using TSC22D1 Antibody . The picture on the right is treated with the synthesized peptide.



Immunohistochemistry (Paraffin-embedded Sections)

Image 2. Human Lung: Formalin-Fixed, Paraffin-Embedded (FFPE)



Western Blotting

Image 3. Western blot analysis of extracts from mouse liver/rat liver cells, using TSC22D1 Antibody . The lane on the right is treated with the synthesized peptide.