



[Go to Product page](#)

Datasheet for ABIN1449699

## anti-DUSP9 antibody (Internal Region)

### 3 Images

#### Overview

Quantity:	50 µg
Target:	DUSP9
Binding Specificity:	Internal Region
Reactivity:	Human, Mouse, Rat
Host:	Rabbit
Clonality:	Polyclonal
Conjugate:	This DUSP9 antibody is un-conjugated
Application:	Western Blotting (WB), Immunofluorescence (IF), Immunohistochemistry (Paraffin-embedded Sections) (IHC (p)), Enzyme Immunoassay (EIA)

#### Product Details

Immunogen:	Synthetic peptide derived from internal region of Human DUSP9
Isotype:	IgG
Cross-Reactivity (Details):	Species reactivity (tested):Human, Mouse, Rat.
Purification:	Immunoaffinity Chromatography

#### Target Details

Target:	DUSP9
Alternative Name:	DUSP9 / MKP4 ( <a href="#">DUSP9 Products</a> )
Background:	Synonyms: Dual specificity protein phosphatase 9, MAP kinase phosphatase 4, Mitogen-

## Target Details

activated protein kinase phosphatase 4

Gene ID: 1852

NCBI Accession: [NP\\_001386](#)

## Application Details

Application Notes: Optimal working dilution should be determined by the investigator.

Restrictions: For Research Use only

## Handling

Concentration: 1.0 mg/mL

Buffer: PBS (without Mg<sup>2+</sup>, Ca<sup>2+</sup>), pH 7.4, 150 mM Sodium Chloride, 50 % Glycerol, 0.02 % Sodium Azide

Preservative: Sodium azide

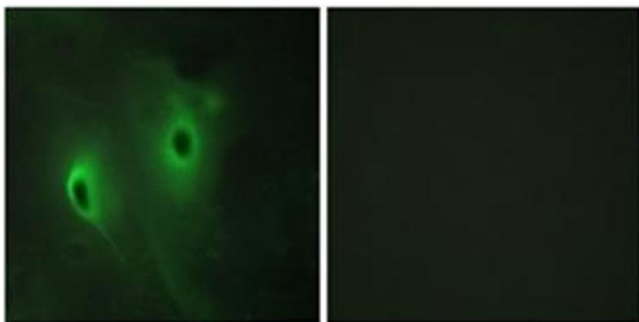
Precaution of Use: This product contains sodium azide: a POISONOUS AND HAZARDOUS SUBSTANCE which should be handled by trained staff only.

Handling Advice: Avoid repeated freezing and thawing.

Storage: 4 °C/-20 °C

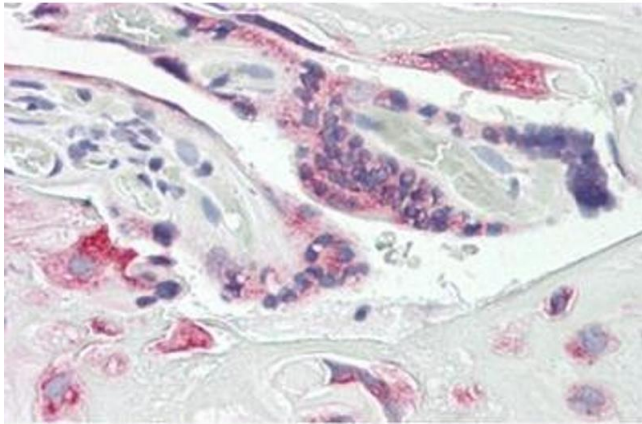
Storage Comment: Store undiluted at 2-8 °C for one month or (in aliquots) at -20 °C for longer.

## Images



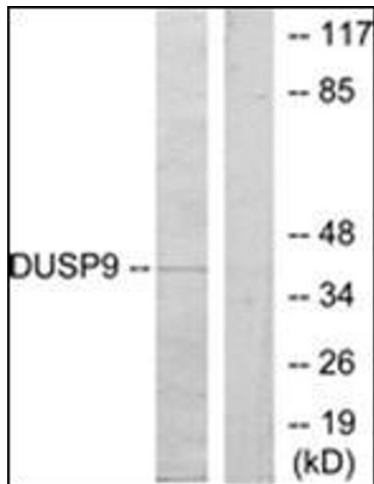
### Immunofluorescence

**Image 1.** Immunofluorescence analysis of HeLa cells, using DUSP9 Antibody . The picture on the right is treated with the synthesized peptide.



### Immunohistochemistry (Paraffin-embedded Sections)

**Image 2.** Human Placenta: Formalin-Fixed, Paraffin-Embedded (FFPE)



### Western Blotting

**Image 3.** Western blot analysis of extracts from HeLa cells, using DUSP9 Antibody . The lane on the right is treated with the synthesized peptide.