



[Go to Product page](#)

Datasheet for ABIN1449731
anti-CDCA3 antibody (C-Term)

2 Images

Overview

Quantity:	50 µg
Target:	CDCA3
Binding Specificity:	C-Term
Reactivity:	Human, Rat, Mouse
Host:	Rabbit
Clonality:	Polyclonal
Conjugate:	This CDCA3 antibody is un-conjugated
Application:	Western Blotting (WB), Immunohistochemistry (Paraffin-embedded Sections) (IHC (p)), Enzyme Immunoassay (EIA)

Product Details

Immunogen:	Synthetic peptide derived from the C-terminal region of Human CDCA3
Isotype:	IgG
Cross-Reactivity (Details):	Species reactivity (tested):Human, Mouse, Rat.
Purification:	Immunoaffinity Chromatography

Target Details

Target:	CDCA3
Alternative Name:	CDCA3 (CDCA3 Products)
Background:	Synonyms: C8, Cell division cycle-associated protein 3, GRCC8, Gene-rich cluster protein C8,

Target Details

TOME-1, TOME1, Trigger of mitotic entry protein 1

Gene ID: 83461

NCBI Accession: [NP_112589](#)

Application Details

Application Notes: Optimal working dilution should be determined by the investigator.

Restrictions: For Research Use only

Handling

Concentration: 1.0 mg/mL

Buffer: PBS (without Mg²⁺, Ca²⁺), pH 7.4, 150 mM Sodium Chloride, 50 % Glycerol, 0.02 % Sodium Azide

Preservative: Sodium azide

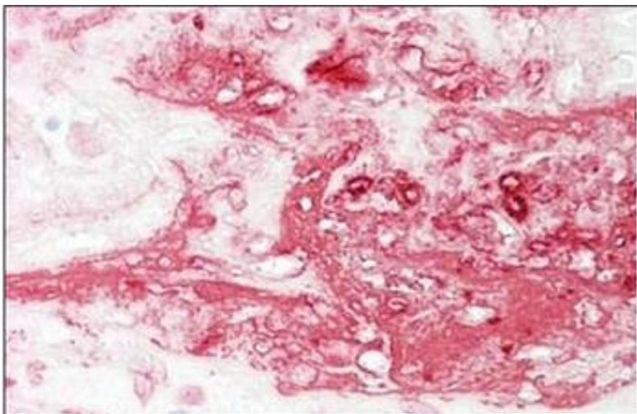
Precaution of Use: This product contains sodium azide: a POISONOUS AND HAZARDOUS SUBSTANCE which should be handled by trained staff only.

Handling Advice: Avoid repeated freezing and thawing.

Storage: 4 °C/-20 °C

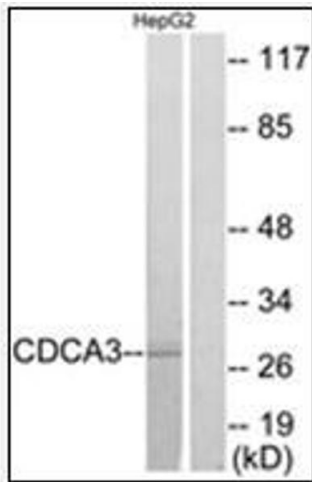
Storage Comment: Store undiluted at 2-8 °C for one month or (in aliquots) at -20 °C for longer.

Images



Immunohistochemistry (Paraffin-embedded Sections)

Image 1. Human Placenta: Formalin-Fixed, Paraffin-Embedded (FFPE)



Western Blotting

Image 2. Western blot analysis of extracts from HepG2 cells, using CDCA3 Antibody . The lane on the right is treated with the synthesized peptide.