

Datasheet for ABIN1449747

anti-SLC25A21 antibody (Internal Region)**2** Images[Go to Product page](#)

Overview

Quantity:	50 µg
Target:	SLC25A21 (Slc25a21)
Binding Specificity:	Internal Region
Reactivity:	Human, Rat, Mouse
Host:	Rabbit
Clonality:	Polyclonal
Conjugate:	This SLC25A21 antibody is un-conjugated
Application:	Western Blotting (WB), Immunohistochemistry (Paraffin-embedded Sections) (IHC (p)), Enzyme Immunoassay (EIA)

Product Details

Immunogen:	Synthetic peptide derived from the internal region of Human SLC25A21.
Isotype:	IgG
Cross-Reactivity (Details):	Species reactivity (tested): Human, Mouse, Rat.
Purification:	Immunoaffinity Chromatography

Target Details

Target:	SLC25A21 (Slc25a21)
Alternative Name:	SLC25A21 / ODC (Slc25a21 Products)
Background:	Synonyms: Mitochondrial 2-oxodicarboxylate carrier, Solute carrier family 25 member 21

Target Details

Gene ID:	89874
NCBI Accession:	NP_001164641
Pathways:	SARS-CoV-2 Protein Interactome

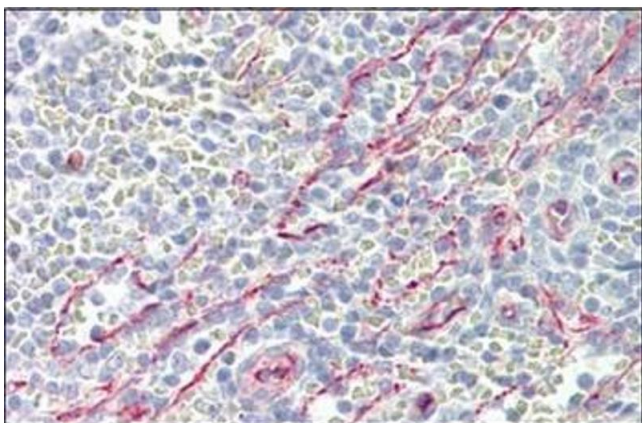
Application Details

Application Notes:	Optimal working dilution should be determined by the investigator.
Restrictions:	For Research Use only

Handling

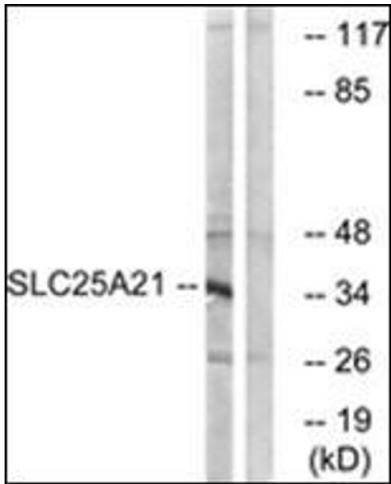
Concentration:	1.0 mg/mL
Buffer:	PBS (without Mg ²⁺ , Ca ²⁺), pH 7.4, 150 mM Sodium Chloride, 50 % Glycerol, 0.02 % Sodium Azide
Preservative:	Sodium azide
Precaution of Use:	This product contains sodium azide: a POISONOUS AND HAZARDOUS SUBSTANCE which should be handled by trained staff only.
Handling Advice:	Avoid repeated freezing and thawing.
Storage:	4 °C/-20 °C
Storage Comment:	Store undiluted at 2-8 °C for one month or (in aliquots) at -20 °C for longer.

Images



Immunohistochemistry (Paraffin-embedded Sections)

Image 1. Human Spleen: Formalin-Fixed, Paraffin-Embedded (FFPE)



Western Blotting

Image 2. Western blot analysis of extracts from HepG2 cells, using SLC25A21 Antibody. The lane on the right is treated with the synthesized peptide.