



[Go to Product page](#)

Datasheet for ABIN1449832

anti-Anoctamin 10 antibody (C-Term)

3 Images

Overview

Quantity:	100 µL
Target:	Anoctamin 10 (ANO10)
Binding Specificity:	C-Term
Reactivity:	Human, Mouse, Rat, Cow, Zebrafish (Danio rerio), Xenopus laevis
Host:	Rabbit
Clonality:	Polyclonal
Conjugate:	This Anoctamin 10 antibody is un-conjugated
Application:	Western Blotting (WB)

Product Details

Immunogen:	Synthetic peptide directed towards the C terminal of human ANO10
Sequence:	LKADIDATLY EQVILEKEMG TYLGTFFDDYL ELFLQFGYVS LFSCVYPLAA
Cross-Reactivity (Details):	Species reactivity (expected):Mouse, Rat, Bovine, African clawed frog, Zebrafish Species reactivity (tested):Human.
Purification:	Purified using peptide immunoaffinity column

Target Details

Target:	Anoctamin 10 (ANO10)
Alternative Name:	ANO10 / TMEM16K (ANO10 Products)
Background:	TMEM16K is a multi-pass membrane protein. It belongs to the anoctamin family. TMEM16K

Target Details

may act as a calcium-activated chloride channel. It is highly expressed in the brain with intermediate levels in the retina and heart and low levels in the placenta, liver, lung, duodenum, kidney, testis and spleen. In brain areas, highest expression in the frontal and occipital cortices and in the cerebellum. Lower expression in the fetal brain than in the adult brain. Synonyms: Anoctamin-10, Transmembrane protein 16K

Gene ID: 55129

NCBI Accession: [NP_060545](#)

Application Details

Application Notes: Optimal working dilution should be determined by the investigator.

Restrictions: For Research Use only

Handling

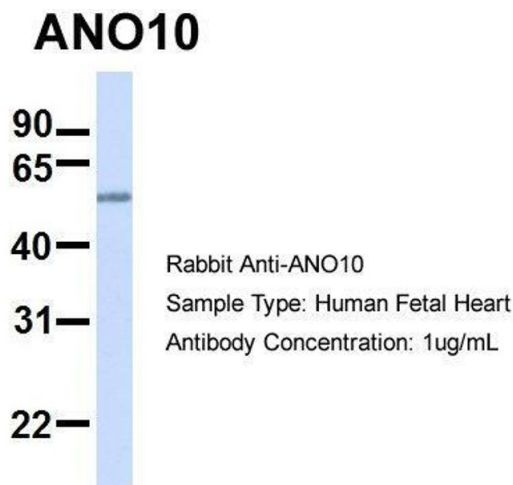
Reconstitution: Add 50 µL of distilled water to a final concentration of 1 mg/mL.

Handling Advice: Avoid repeated freezing and thawing.

Storage: 4 °C/-20 °C

Storage Comment: Store lyophilized at 2-8 °C for one month or at -20 °C long term. After reconstitution store the antibody undiluted at 2-8 °C for up to one month or in aliquots at -20 °C long term.

Images



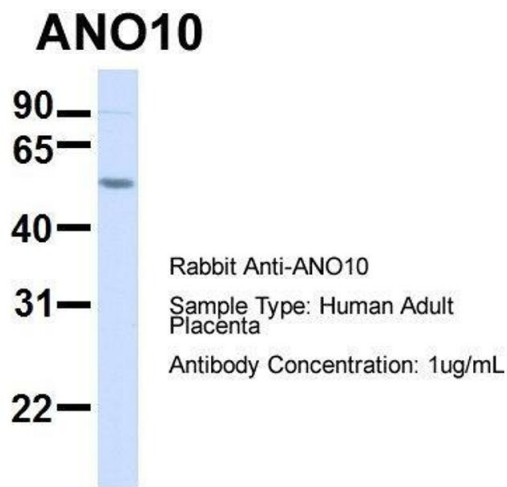
Western Blotting

Image 1. Hum. Fetal Heart; Host: Rabbit . Target Name: ANO10 . Sample Tissue: Human Fetal Heart . Antibody Dilution: 1.0 µg/mL; TMEM16K antibody - C-terminal region in Hum. Fetal Heart cells using Western Blot



Western Blotting

Image 2. Human 293T; WB Suggested Anti-TMEM16K Antibody Titration: 0.2-1 ug/ml. ELISA Titer: 1:62500. Positive Control: 293T cell lysate; TMEM16K antibody - C-terminal region in Human 293T cells using Western Blot



Western Blotting

Image 3. Hum. Adult Placenta; Host: Rabbit . Target Name: ANO10 . Sample Tissue: Human Adult Placenta . Antibody Dilution: 1.0ug/ml.; TMEM16K antibody - C-terminal region in Hum. Adult Placenta cells using Western Blot