

Datasheet for ABIN1449902
anti-ARL8B antibody (Middle Region)[Go to Product page](#)

1 Image

Overview

Quantity:	100 µL
Target:	ARL8B
Binding Specificity:	Middle Region
Reactivity:	Human, Mouse, Rat, Cow, Dog, Rabbit, Sheep, Pig, Chicken
Host:	Rabbit
Clonality:	Polyclonal
Conjugate:	This ARL8B antibody is un-conjugated
Application:	Western Blotting (WB)

Product Details

Immunogen:	Synthetic peptide directed towards the middle region of human ARL8B
Sequence:	SRNELHNLLD KPQLQGIPVL VLGNKRDLPN ALDEKQLIEK MNLSAIQDRE
Cross-Reactivity (Details):	Species reactivity (expected): Mouse, Rat, Dog, Pig, Bovine, Sheep, Rabbit, Chicken Species reactivity (tested): Human.
Purification:	Purified on peptide immunoaffinity column

Target Details

Target:	ARL8B
Alternative Name:	ARL8B / ARL10C (ARL8B Products)
Background:	ARL8B is an ubiquitously expressed protein of 22 kDa. It may play a role in lysosome motility

Target Details

and chromosome segregation.Synonyms: ADP-ribosylation factor-like protein 10C, ADP-ribosylation factor-like protein 8B, GIE1, Novel small G protein indispensable for equal chromosome segregation 1

Gene ID: 55207

NCBI Accession: [NP_060654](#)

Application Details

Application Notes: Optimal working dilution should be determined by the investigator.

Restrictions: For Research Use only

Handling

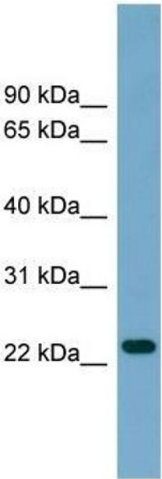
Reconstitution: Add 50 µL of distilled water to a final concentration of 1 mg/mL.

Handling Advice: Avoid repeated freezing and thawing.

Storage: 4 °C/-20 °C

Storage Comment: Store lyophilized at 2-8 °C for one month or at -20 °C long term. After reconstitution store the antibody undiluted at 2-8 °C for up to one month or in aliquots at -20 °C long term.

Images



Western Blotting

Image 1. Human THP-1; WB Suggested Anti-ARL8B Antibody Titration: 0.2-1 ug/ml. Positive Control: THP-1 cell lysate; ARL8B antibody - middle region in Human THP-1 cells using Western Blot