

Datasheet for ABIN1449920
anti-Septin 1 antibody (C-Term)[Go to Product page](#)

2 Images

Overview

Quantity:	0.1 mg
Target:	Septin 1 (SEPT1)
Binding Specificity:	C-Term
Reactivity:	Human, Mouse, Rat
Host:	Rabbit
Clonality:	Polyclonal
Conjugate:	This Septin 1 antibody is un-conjugated
Application:	Western Blotting (WB), Immunofluorescence (IF), Enzyme Immunoassay (EIA)

Product Details

Immunogen:	A 17 amino acid synthetic peptide near the carboxy terminus of Human SEPT1
Isotype:	IgG
Purification:	Affinity chromatography purified via peptide column

Target Details

Target:	Septin 1 (SEPT1)
Alternative Name:	Septin-1 (SEPT1) (SEPT1 Products)
Background:	SEPT1 (also known as Septin 1), is a member of the septin family of GTPases. Members of this family are required for cytokinesis and the maintenance of cellular morphology. SEPT1 was initially identified through yeast two-hybrid screening as an interaction partner for the serine/threonine kinase Aurora-B. During mitosis, SEPT1 localizes to the spindle pole,

Target Details

suggesting that it may play a role in cytokinesis and chromosome congression. Synonyms: DIFF6, LARP, NY-BR-24, PNUTL3, Peanut-like protein 3, Serologically defined breast cancer antigen NY-BR-24

Gene ID: 1731

NCBI Accession: [NP_443070](#)

Application Details

Application Notes: Optimal working dilution should be determined by the investigator.

Restrictions: For Research Use only

Handling

Concentration: 1.0 mg/mL

Buffer: PBS containing 0.02 % Sodium Azide as preservative

Preservative: Sodium azide

Precaution of Use: This product contains sodium azide: a POISONOUS AND HAZARDOUS SUBSTANCE which should be handled by trained staff only.

Handling Advice: Avoid repeated freezing and thawing.

Storage: 4 °C/-20 °C

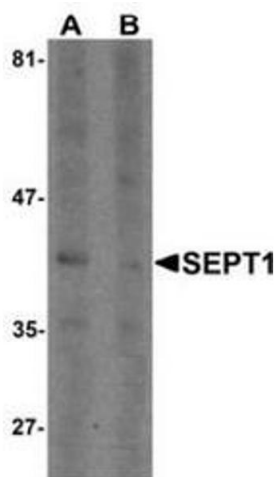
Storage Comment: Store undiluted at 2-8 °C for one month or (in aliquots) at -20 °C for longer.

Images



Immunofluorescence

Image 1. Immunocytochemistry of SEPT1 in Raji cells with SEPT1 antibody at 5 µg/ml.



Western Blotting

Image 2. Western blot analysis of SEPT1 in Raji cell lysate with SEPT1 Antibody at 1 µg/ml in (A) the absence and (B) the presence of blocking peptide.