

Datasheet for ABIN1449922
anti-TTYH1 antibody (C-Term)[Go to Product page](#)

2 Images

Overview

Quantity:	0.1 mg
Target:	TTYH1
Binding Specificity:	C-Term
Reactivity:	Human
Host:	Rabbit
Clonality:	Polyclonal
Application:	Western Blotting (WB), Immunofluorescence (IF), Enzyme Immunoassay (EIA)

Product Details

Immunogen:	17 amino acid synthetic peptide near the carboxy terminus of Human TTYH1
Isotype:	IgG
Cross-Reactivity (Details):	Species reactivity (tested):Human.
Purification:	Affinity chromatography purified via peptide column

Target Details

Target:	TTYH1
Alternative Name:	TTYH1 (TTYH1 Products)
Background:	TTYH1 is a member of the tweety family of proteins, a family of chloride anion channels containing five transmembrane regions. TTYH1 is a Ca ²⁺ -independent, volume-sensitive large conductance chloride (Cl ⁻) channel. TTYH1 is primarily expressed in neural tissue and upregulated in astrocytoma, glioma, and several other cancers. Recent experiments have

Target Details

shown that TTYH1 is an integral endoplasmic reticulum (ER) membrane protein involved in cell proliferation and is thought to play an essential role in embryonic cell growth, possibly through the Ca²⁺ storage/release process in ER membranes during early development. Synonyms: Protein tweety homolog 1

Gene ID: 57348

NCBI Accession: [NP_001005367](#)

Application Details

Application Notes: Optimal working dilution should be determined by the investigator.

Restrictions: For Research Use only

Handling

Concentration: 1.0 mg/mL

Buffer: PBS containing 0.02 % Sodium Azide as preservative

Preservative: Sodium azide

Precaution of Use: This product contains sodium azide: a POISONOUS AND HAZARDOUS SUBSTANCE which should be handled by trained staff only.

Handling Advice: Avoid repeated freezing and thawing.

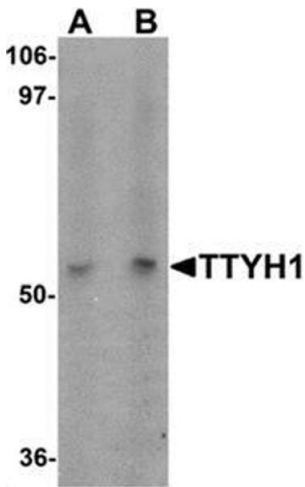
Storage: 4 °C/-20 °C

Storage Comment: Store undiluted at 2-8 °C for one month or (in aliquots) at -20 °C for longer.



Immunofluorescence

Image 1. Immunocytochemistry of TTYH1 in Raji cells with TTYH1 antibody at 5 ug/mL.



Western Blotting

Image 2. Western blot analysis of TTYH1 in Raji cell lysate with TTYH1 antibody at (A) 1 and (B) 2 ug/mL.