

Datasheet for ABIN1449923  
**anti-SDHAF1 antibody (C-Term)**[Go to Product page](#)

## 2 Images

## Overview

Quantity:	0.1 mg
Target:	SDHAF1
Binding Specificity:	C-Term
Reactivity:	Human, Mouse
Host:	Rabbit
Clonality:	Polyclonal
Conjugate:	This SDHAF1 antibody is un-conjugated
Application:	Western Blotting (WB), Enzyme Immunoassay (EIA), Immunofluorescence (IF)

## Product Details

Immunogen:	18 amino acid synthetic peptide near the carboxy terminus of Human SDHAF1
Isotype:	IgG
Cross-Reactivity (Details):	Species reactivity (tested): Human, Mouse.
Purification:	Affinity chromatography purified via peptide column

## Target Details

Target:	SDHAF1
Alternative Name:	SDHAF1 ( <a href="#">SDHAF1 Products</a> )
Background:	SDHAF1 (Succinate dehydrogenase complex assembly factor 1) is one of the subunits of the succinate dehydrogenase (SDH) complex (or complex II) of the mitochondrial respiratory chain.

## Target Details

SDHAF1 resides in the mitochondria, and is essential for SDH assembly, but does not physically associate with the complex in vivo. Mutations in this gene are associated with SDH-defective infantile leukoencephalopathy (mitochondrial complex II deficiency). Unlike the related protein SDHAF2, SDHAF1 is not thought to be a tumor suppressor. Synonyms: LYR motif-containing protein 8, SDH assembly factor 1, Succinate dehydrogenase assembly factor 1 mitochondrial

Gene ID: 644096

NCBI Accession: [NP\\_001036096](#)

## Application Details

Application Notes: Optimal working dilution should be determined by the investigator.

Restrictions: For Research Use only

## Handling

Concentration: 1.0 mg/mL

Buffer: PBS containing 0.02 % Sodium Azide as preservative

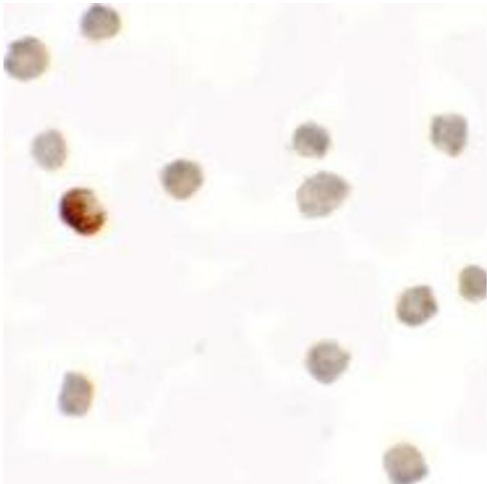
Preservative: Sodium azide

Precaution of Use: This product contains sodium azide: a POISONOUS AND HAZARDOUS SUBSTANCE which should be handled by trained staff only.

Handling Advice: Avoid repeated freezing and thawing.

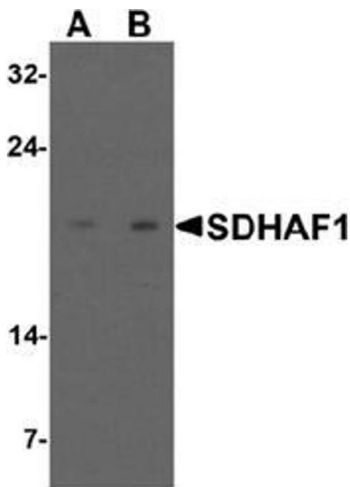
Storage: 4 °C/-20 °C

Storage Comment: Store undiluted at 2-8 °C for one month or (in aliquots) at -20 °C for longer.



Immunofluorescence

**Image 1.** Immunocytochemistry of SDHAF1 in 3T3 cells with SDHAF1 antibody at 5 ug/mL.



Western Blotting

**Image 2.** Western blot analysis of SDHAF1 in 3T3 cell lysate with SDHAF1 antibody at (A) 1 and (B) 2 ug/mL.