



[Go to Product page](#)

Datasheet for ABIN1449925
anti-FCHO2 antibody (Middle Region)

2 Images

Overview

Quantity:	0.1 mg
Target:	FCHO2
Binding Specificity:	Middle Region
Reactivity:	Human, Mouse, Rat
Host:	Rabbit
Clonality:	Polyclonal
Conjugate:	This FCHO2 antibody is un-conjugated
Application:	Western Blotting (WB), Immunohistochemistry (Paraffin-embedded Sections) (IHC (p)), Enzyme Immunoassay (EIA)

Product Details

Immunogen:	FCHO2 antibody was raised against a 15 amino acid synthetic peptide near the center of human FCHO2.
Isotype:	IgG
Cross-Reactivity (Details):	Species reactivity (tested):Human, Mouse, Rat
Purification:	Affinity chromatography purified via peptide column

Target Details

Target:	FCHO2
Alternative Name:	FCHO2 (FCHO2 Products)

Target Details

Background: FCHO2 (FCH domain only 2) is a ubiquitously expressed member of the FCFBS superfamily characterized by FES-CIP4 homology (FCH) domain, an FBH domain, and an SH3 domain. Both FCHO2 and the related protein FCHO1 are mediators of clathrin-mediated endocytosis, acting to sculpt the initial bud site and recruit the clathrin machinery for clathrin-coated vesicle formation. FCHO2 binds to Eps15, an important adaptor protein in clathrin-mediated endocytosis. Synonyms: FCH domain only 2

Gene ID: 115548

NCBI Accession: [NP_620137](#)

Application Details

Application Notes: Optimal working dilution should be determined by the investigator.

Restrictions: For Research Use only

Handling

Concentration: 1.0 mg/mL

Buffer: PBS containing 0.02 % Sodium Azide as preservative

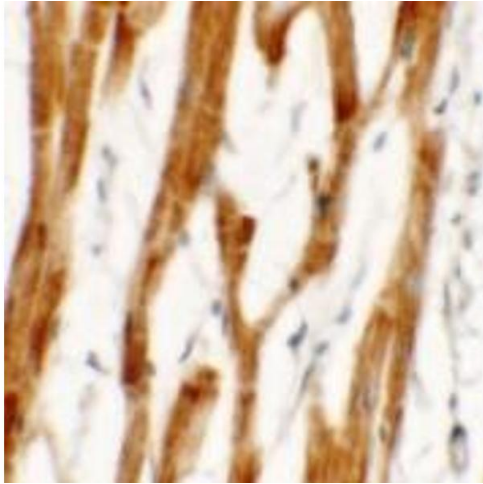
Preservative: Sodium azide

Precaution of Use: This product contains sodium azide: a POISONOUS AND HAZARDOUS SUBSTANCE which should be handled by trained staff only.

Handling Advice: Avoid repeated freezing and thawing.

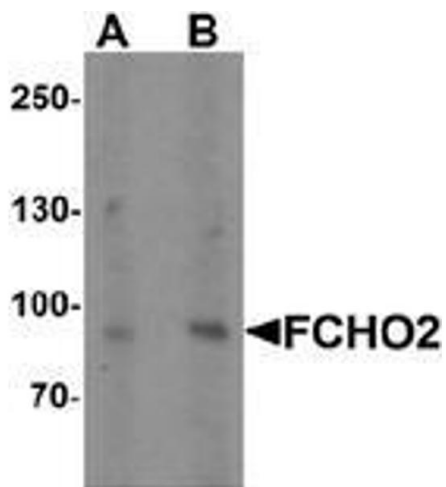
Storage: 4 °C/-20 °C

Storage Comment: Store undiluted at 2-8 °C for one month or (in aliquots) at -20 °C for longer.



Immunohistochemistry (Paraffin-embedded Sections)

Image 1. Immunohistochemistry of FCHO2 in human heart tissue with FCHO2 antibody Cat.-No. AP55420PU-N at 2.5 $\mu\text{g/ml}$.



Western Blotting

Image 2. Western blot analysis of FCHO2 in rat heart tissue lysate with FCHO2 Antibody at (A) 1 and (B) 2 $\mu\text{g/ml}$