

Datasheet for ABIN1449927  
**anti-SDHD antibody (Middle Region)**[Go to Product page](#)

## 2 Images

## Overview

Quantity:	0.1 mg
Target:	SDHD
Binding Specificity:	Middle Region
Reactivity:	Human, Rat, Mouse
Host:	Rabbit
Clonality:	Polyclonal
Conjugate:	This SDHD antibody is un-conjugated
Application:	Western Blotting (WB), Immunofluorescence (IF), Enzyme Immunoassay (EIA)

## Product Details

Immunogen:	15 amino acid synthetic peptide near the center of Human SDHD
Isotype:	IgG
Cross-Reactivity (Details):	Species reactivity (tested): Human, Mouse, Rat.
Purification:	Affinity chromatography purified via peptide column

## Target Details

Target:	SDHD
Alternative Name:	SDHD ( <a href="#">SDHD Products</a> )
Background:	The mitochondrial succinate dehydrogenase complex subunit D (SDHD) is one of four proteins that make up the tricarboxylic cycle enzyme succinate dehydrogenase (SCH). Studies have

## Target Details

shown that mutations in SDHD often leads to hereditary paragangliomas, usually benign tumors of the autonomic nervous system, suggesting that SDHD also plays a role as a tumor-suppressor gene. In one family with a nonsense mutation (R22X) in the SDHD gene, a loss of heterozygosity was found in the paragangliomas, and within these tumors the enzymatic activity of Complex II in the mitochondrial respiratory chain was completely abolished. Furthermore, high levels of angiogenic factors EPAS1 and VEGF was observed, which may stimulate tumor growth. Synonyms: CII-4, CybS, QPs3, SDH4, Succinate dehydrogenase [ubiquinone] cytochrome b small subunit mitochondrial, Succinate dehydrogenase complex subunit D, Succinate-ubiquinone oxidoreductase cytochrome b small subunit, Succinate-ubiquinone reductase membrane anchor subunit

Gene ID: 6392

NCBI Accession: [NP\\_002993](#)

## Application Details

Application Notes: Optimal working dilution should be determined by the investigator.

Restrictions: For Research Use only

## Handling

Concentration: 1.0 mg/mL

Buffer: PBS containing 0.02 % Sodium Azide as preservative

Preservative: Sodium azide

Precaution of Use: This product contains sodium azide: a POISONOUS AND HAZARDOUS SUBSTANCE which should be handled by trained staff only.

Handling Advice: Avoid repeated freezing and thawing.

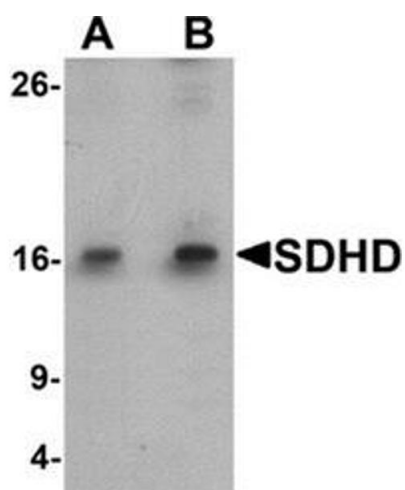
Storage: 4 °C/-20 °C

Storage Comment: Store undiluted at 2-8 °C for one month or (in aliquots) at -20 °C for longer.



#### Immunofluorescence

**Image 1.** Immunocytochemistry of SDHD in EL4 cells with SDHD antibody at 2.5 ug/mL.



#### Western Blotting

**Image 2.** Western blot analysis of SDHD in EL4 cell lysate with SDHD antibody at (A) 1 and (B) 2 ug/mL.