

Datasheet for ABIN1449932  
**anti-CLEC7A antibody (Middle Region)**[Go to Product page](#)

## 2 Images

## Overview

Quantity:	0.1 mg
Target:	CLEC7A
Binding Specificity:	Middle Region
Reactivity:	Human, Mouse, Rat
Host:	Rabbit
Clonality:	Polyclonal
Conjugate:	This CLEC7A antibody is un-conjugated
Application:	Western Blotting (WB), Immunohistochemistry (Paraffin-embedded Sections) (IHC (p)), Immunofluorescence (IF), Enzyme Immunoassay (EIA)

## Product Details

Immunogen:	17 amino acid synthetic peptide near the center of Human CLEC7A
Isotype:	IgG
Cross-Reactivity (Details):	Species reactivity (tested): Human, Mouse, Rat.
Purification:	Affinity chromatography purified via peptide column

## Target Details

Target:	CLEC7A
Alternative Name:	CLEC7A / Dectin-1 ( <a href="#">CLEC7A Products</a> )
Background:	CLEC7A, also known as dectin-1, is a member of the C-type lectin/C-type lectin-like domain

## Target Details

(CTL/CTLD) superfamily and is predominantly expressed on myeloid cells. It is a small glycoprotein type II membrane receptor with an extracellular C-type lectin-like domain fold and a cytoplasmic domain with an immunoreceptor tyrosine-based activation motif (ITAM). CLEC7A functions as a pattern-recognition receptor that recognizes a variety of beta-1,3-linked and beta-1,6-linked glucans from fungi and plants, and in this way plays a role in innate immune response. Upon fungal exposure, CLEC7A activates Syk tyrosine kinase, triggering a massive oxidative burst through the formation of reactive oxygen species. Synonyms: BGR, Beta-glucan receptor, C-type lectin domain family 7 member A, C-type lectin superfamily member 12, CLECSF12, DC-associated C-type lectin 1, DECTIN1, Dendritic cell-associated C-type lectin 1

Gene ID: 64581

NCBI Accession: [NP\\_922938](#)

Pathways: [Activation of Innate immune Response](#)

## Application Details

Application Notes: Optimal working dilution should be determined by the investigator.

Restrictions: For Research Use only

## Handling

Concentration: 1.0 mg/mL

Buffer: PBS containing 0.02 % Sodium Azide as preservative

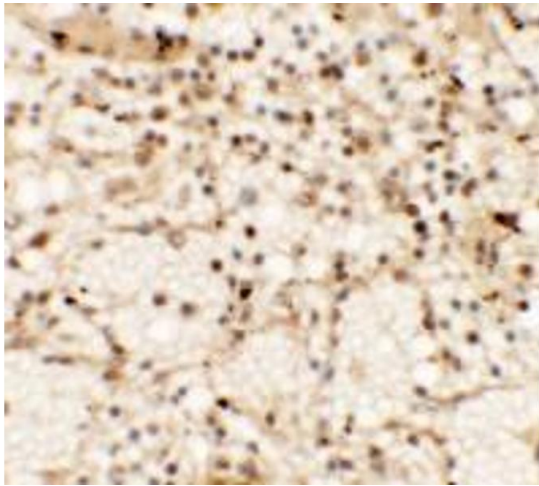
Preservative: Sodium azide

Precaution of Use: This product contains sodium azide: a POISONOUS AND HAZARDOUS SUBSTANCE which should be handled by trained staff only.

Handling Advice: Avoid repeated freezing and thawing.

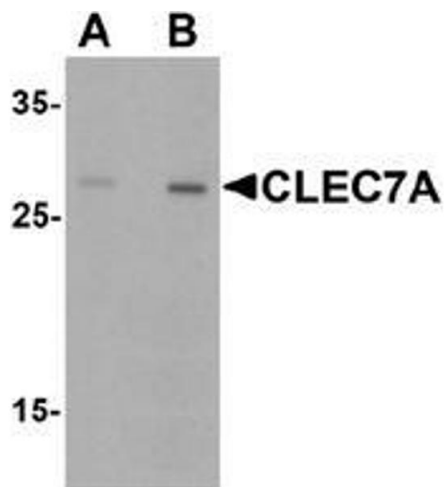
Storage: 4 °C/-20 °C

Storage Comment: Store undiluted at 2-8 °C for one month or (in aliquots) at -20 °C for longer.



#### Immunohistochemistry (Paraffin-embedded Sections)

**Image 1.** Immunohistochemistry of CLEC7A in human spleen tissue with CLEC7A antibody at 5 µg/ml.



#### Western Blotting

**Image 2.** Western blot analysis of CLEC7A in rat spleen tissue lysate with CLEC7A antibody at (A) 1 and (B) 2 µg/.