

Datasheet for ABIN1449934
anti-Centriolin antibody (C-Term)[Go to Product page](#)

2 Images

Overview

Quantity:	0.1 mg
Target:	Centriolin (CNTRL)
Binding Specificity:	C-Term
Reactivity:	Human, Mouse, Rat
Host:	Rabbit
Clonality:	Polyclonal
Conjugate:	This Centriolin antibody is un-conjugated
Application:	Western Blotting (WB), Enzyme Immunoassay (EIA), Immunohistochemistry (Paraffin-embedded Sections) (IHC (p)), Immunofluorescence (IF)

Product Details

Immunogen:	17 amino acid synthetic peptide near the carboxy terminus of Human CCP110
Isotype:	IgG
Cross-Reactivity (Details):	Species reactivity (tested): Human, Mouse, Rat.
Purification:	Affinity chromatography purified via peptide column

Target Details

Target:	Centriolin (CNTRL)
Alternative Name:	CEP110 (CNTRL Products)
Background:	CCP110 is a centrosomal protein required for the centrosome to function as a microtubule

Target Details

organizing center and plays an essential role in centrosome duplication. It is a target of cyclin-dependent kinases (CDKs), disruption of CCP110 phosphorylation leads to unscheduled centrosome separation and polyploidy. CCP110 is also a target of SCF (Cyclin F) ubiquitin ligase complex, leading to its degradation, suggesting that this complex controls centrosome homeostasis and mitotic fidelity through CCP110 degradation. The centriolar kinesin Kif24 also interacts with CP110 and remodel microtubules and regulate ciliogenesis. Synonyms: CP110, Centrosomal protein of 110 kDa, KIAA0419

Gene ID: 9738

NCBI Accession: [NP_001185951](#)

Pathways: [M Phase](#), [SARS-CoV-2 Protein Interactome](#)

Application Details

Application Notes: Optimal working dilution should be determined by the investigator.

Restrictions: For Research Use only

Handling

Concentration: 1.0 mg/mL

Buffer: PBS containing 0.02 % Sodium Azide as preservative

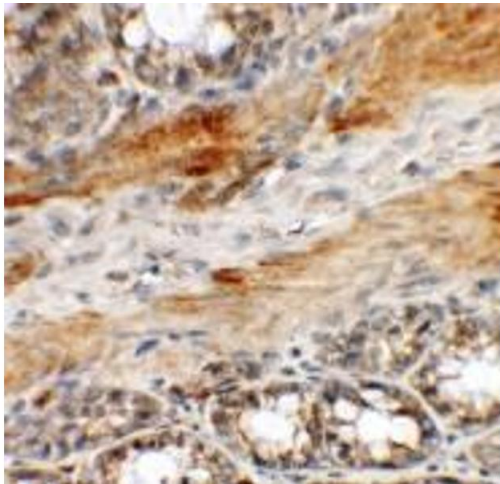
Preservative: Sodium azide

Precaution of Use: This product contains sodium azide: a POISONOUS AND HAZARDOUS SUBSTANCE which should be handled by trained staff only.

Handling Advice: Avoid repeated freezing and thawing.

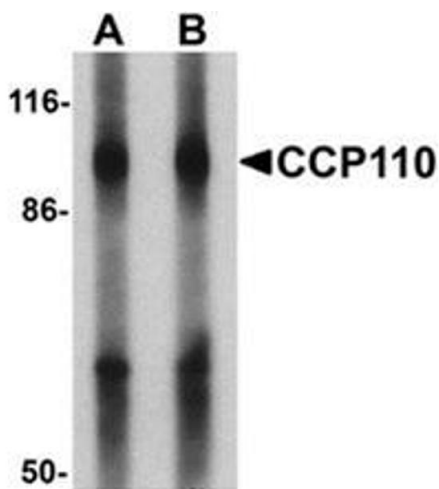
Storage: 4 °C/-20 °C

Storage Comment: Store undiluted at 2-8 °C for one month or (in aliquots) at -20 °C for longer.



Immunohistochemistry (Paraffin-embedded Sections)

Image 1. Immunohistochemistry of CCP110 in rat colon tissue with CCP110 antibody at 5 ug/mL.



Western Blotting

Image 2. Western blot analysis of CCP110 in human colon tissue lysate with CCP110 Antibody at (A) 1 and (B) 2 ug/mL.